

15	10-06500-G25-9028-1220	package		1			
14	10-06517-G25-21	o-ring	NBR	1	0.7	0.7	
13	10-06500-G25-542M	fixing pipe	CW617N-4MS	1	78	78	
12	10-06500-G25-0R28-1220	body	CW617N-4MS	1	134.4	134.4	
11	10-06207-R25-5628	fixing nut	CW617N-4MS	1	64.7	64.7	
10	10-01516-G25-5000	press nut	CW617N-4MS	1	3.7	3.7	
9	10-01516-G25-22	gasket	PTFE	1	0.4	0.4	
8	10-01500-G25-4000	stem	CW617N-4MS	1	18.4	18.3	
7	10-01500-G25-3052	ball	CW617N-4MS	1	71.8	71.7	
6	10-01500-G25-20	sealing seat	PTFE	2	1.8	3.6	
5	10-01500-G25-1R28	bonnet	CW617N-4MS	1	70.2	70.2	
4	10-01407-R40-7663	rubber sleeve-blue	VMQ (硅胶)	1	0.4	0.4	
3	10-01407-R40-7660	rubber sleeve-red	VMQ (硅胶)	1	0.4	0.4	
2	10-01207-G25-7360-1220	handle	AL	1	20.5	20.5	
1	10-01029-N25-6200	nut	stainless steel	1	4.8	4.8	
No	Drawing No	Name	Material	QTY	pc	total	Weight/g

KFCS3

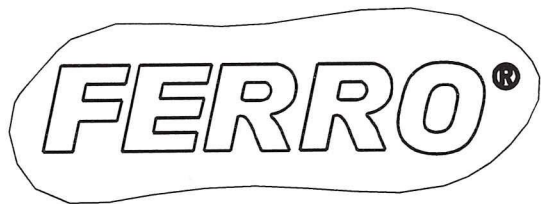
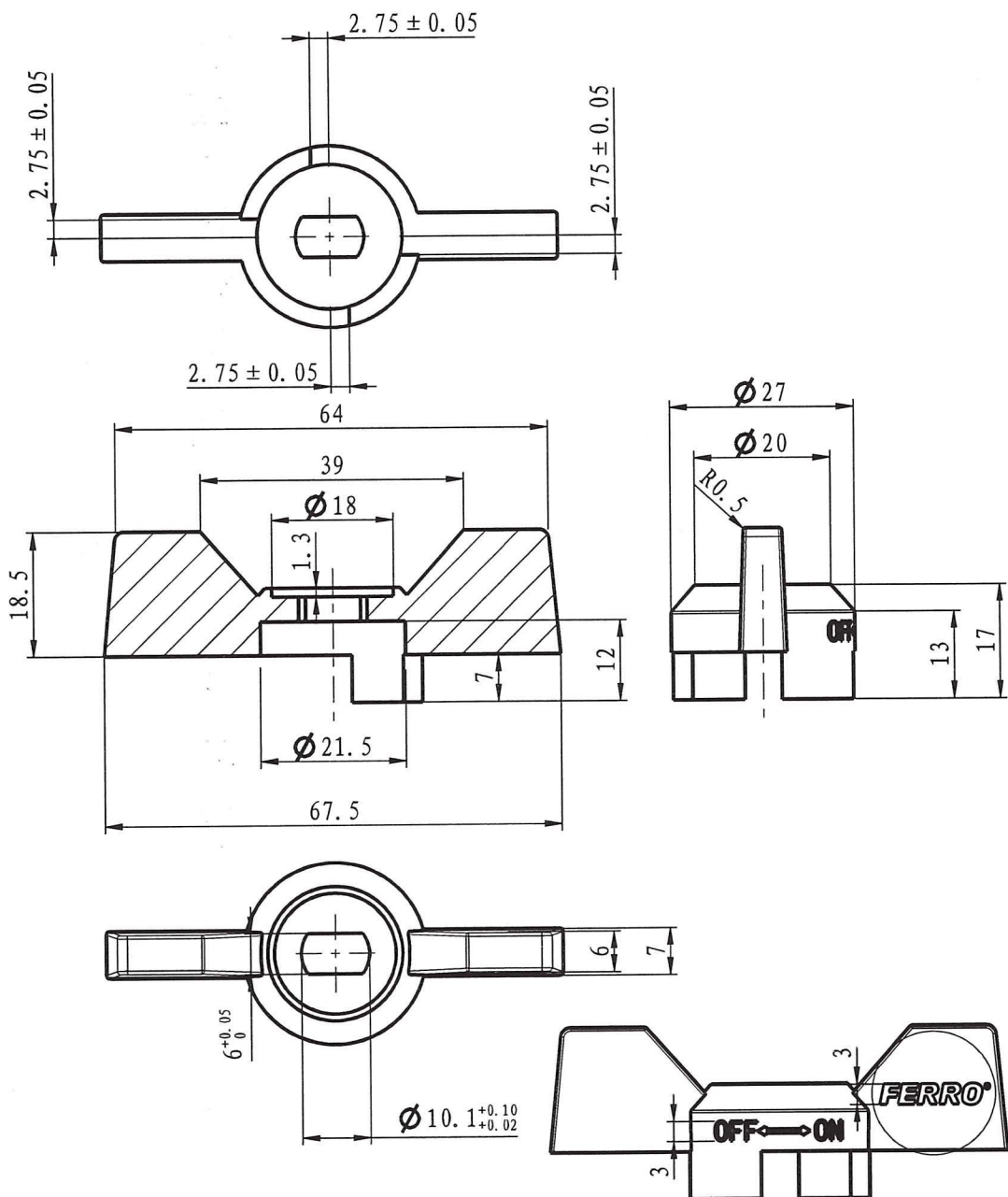
Drawing No.: 10-06500-G25-CP28-1220

Weight: 472g

FERRO S.A.
32-050 Skawina ul. Przemysłowa 7
REGON 356375368, NIP 944-20-51-648

(15)
hbor

Produce for Ferro. S.A

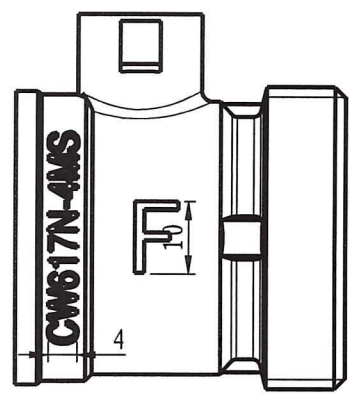
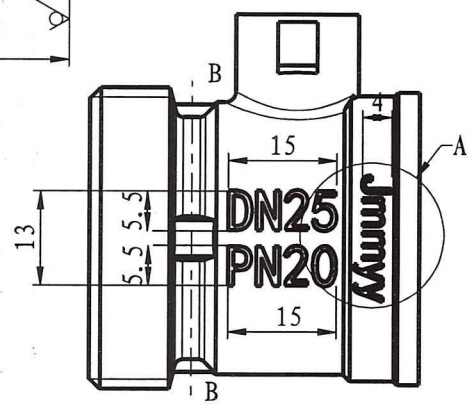
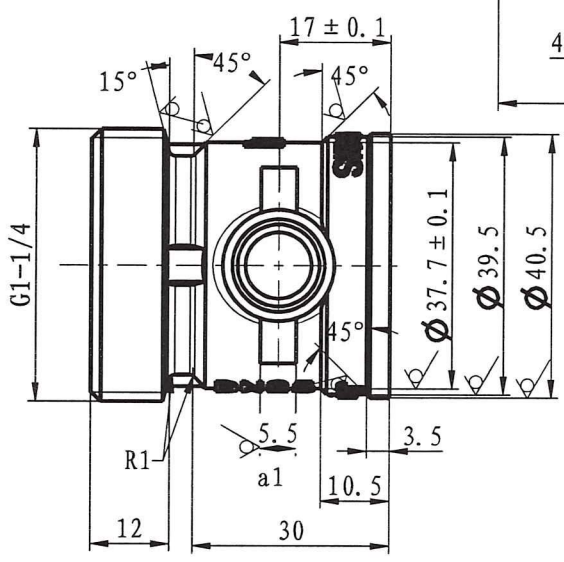
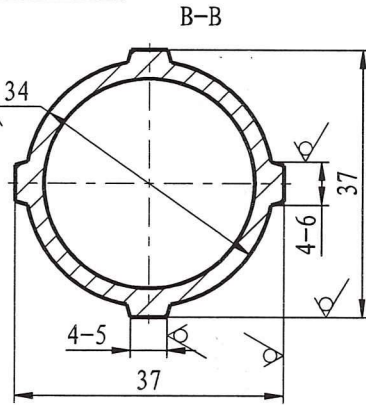
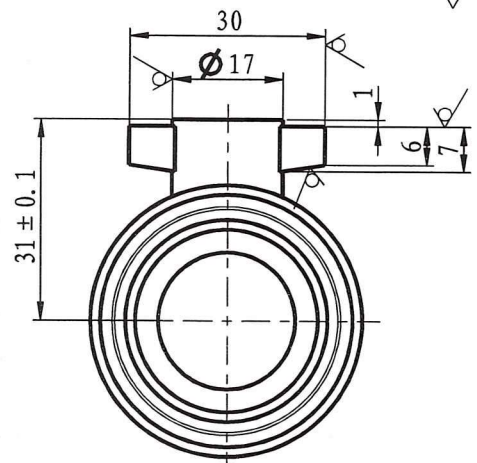
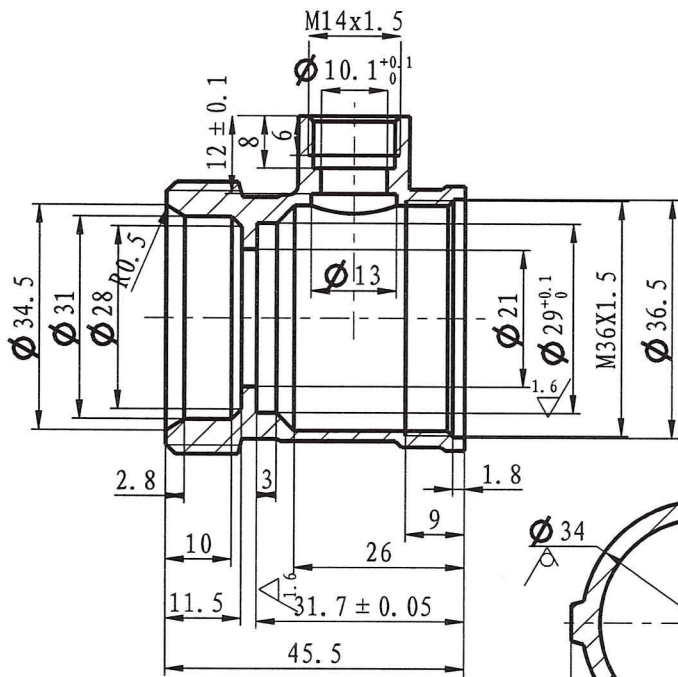



Handle
 Drawing No.: 10-01207-G25-7360-1220
 Material: Al

lukowh

Produce for Ferro. S.A

≤ 6	> 6-20	> 20-40	> 40-60	> 60-120	> 120-400
± 0.05	± 0.1	± 0.15	± 0.2	± 0.3	± 0.4



supplier code
 week
 year

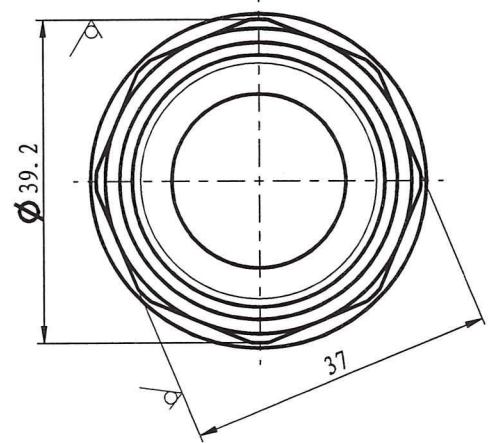
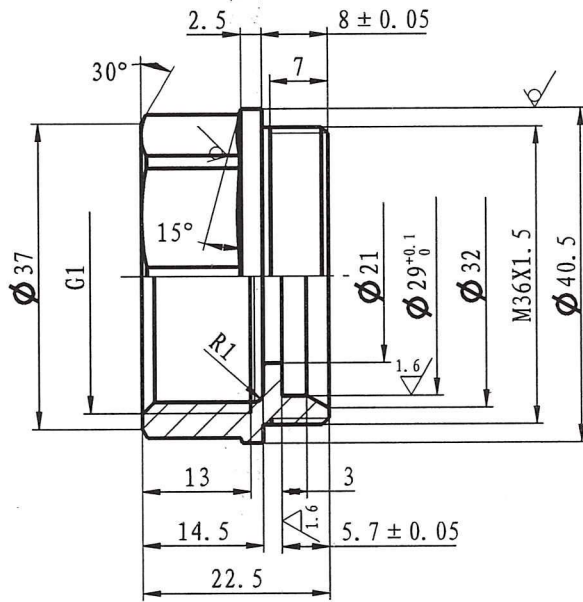
laser marking

Body
 Drawing No.: 10-06500-G25-0R28-1220
 Material: CW617N-4MS

h/ank

Produce for Ferro. S.A

≤ 6	± 0.05
$> 6-20$	± 0.1
$> 20-40$	± 0.15
$> 40-60$	± 0.2
$> 60-120$	± 0.3
$> 120-400$	± 0.4

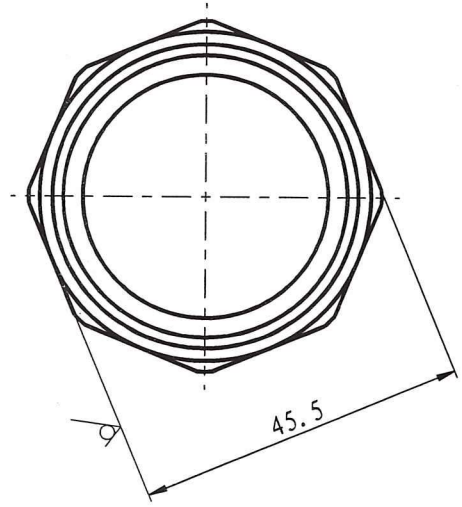
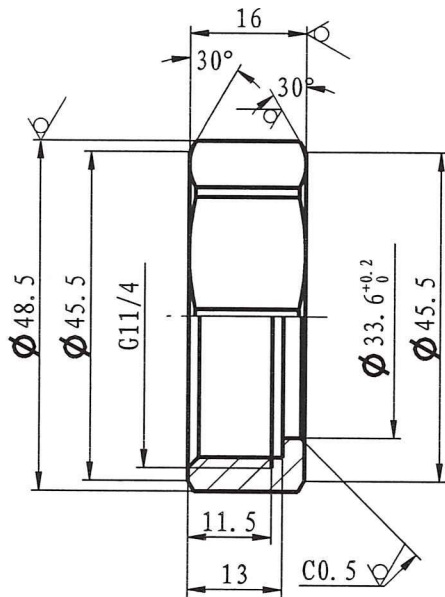


≤ 6	± 0.05
> 6-20	± 0.1
> 20-40	± 0.15
> 40-60	± 0.2
> 60-120	± 0.3
> 120-400	± 0.4

Bonnet
 Drawing No.: 10-01500-G25-1R28
 Material: CW617N-4MS

hlowh

Produce for Ferro. S.A

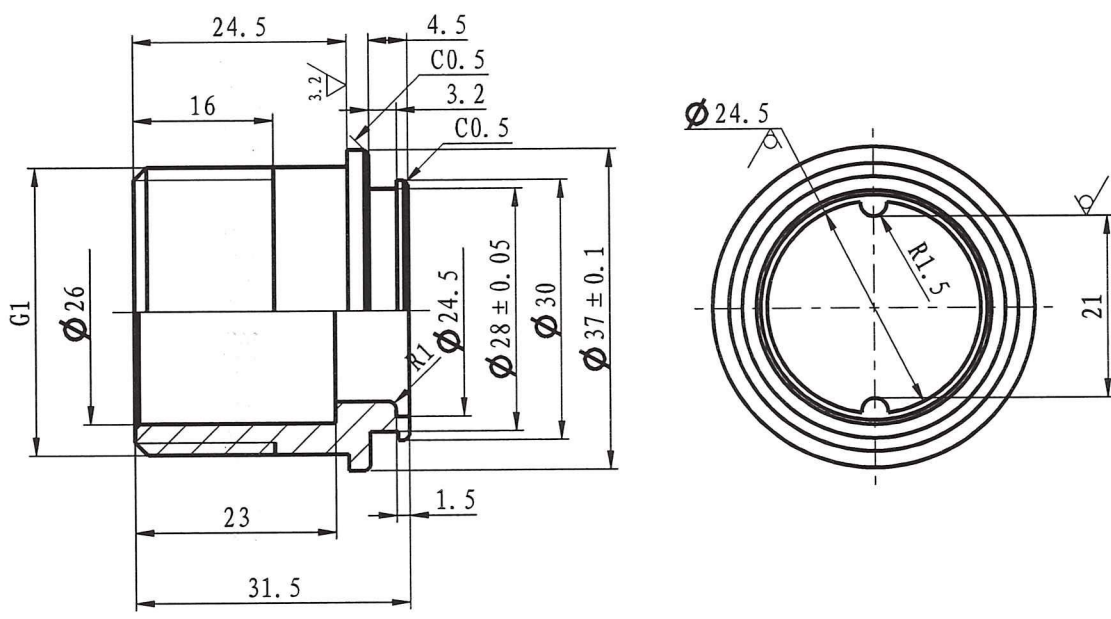


≤ 6	± 0.05	> 6-20	± 0.1	> 20-40	± 0.15	> 40-60	± 0.2	> 60-120	± 0.3	> 120-400	± 0.4
-----	--------	--------	-------	---------	--------	---------	-------	----------	-------	-----------	-------

Fixing nut
 Drawing No.: 10-06207-R25-5628
 Material: CW617N-4MS

h/lowh

Produce for Ferro. S.A

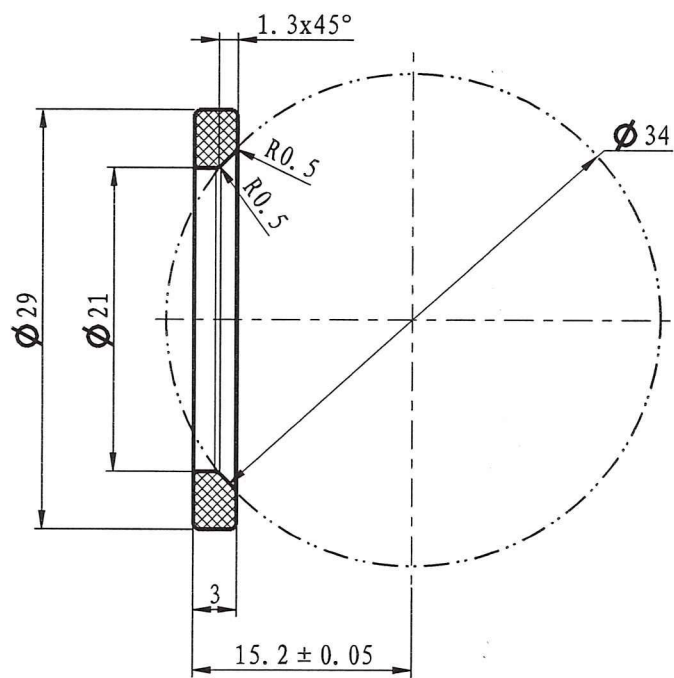


≤ 6	> 6-20	> 20-40	> 40-60	> 60-120	> 120-400
± 0.05	± 0.1	± 0.15	± 0.2	± 0.3	± 0.4

Fixing pipe
 Drawing No.: 10-06500-G25-542M
 Material: CW617N-4MS

Handwritten signature

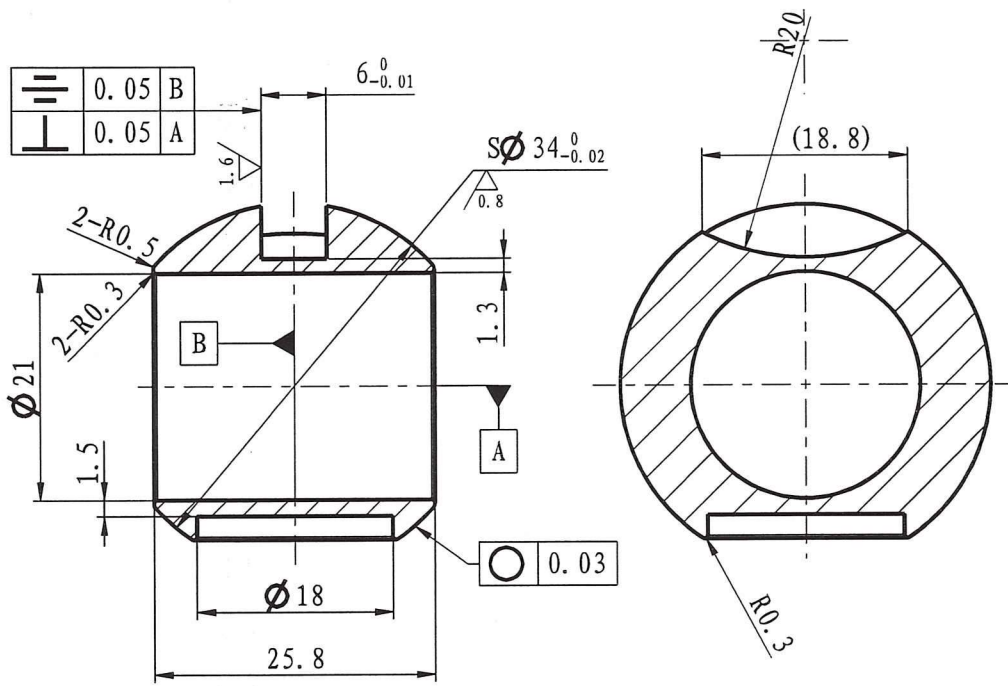
Produce for Ferro. S.A



Sealing seat
 Drawing No.: 10-01500-G25-20
 Material: PTFE

hlova

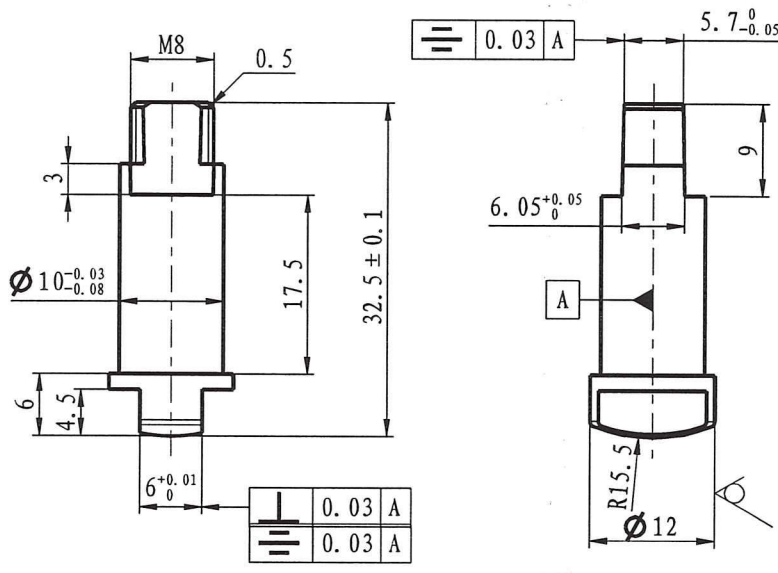
Produce for Ferro. S.A



Ball
 Drawing No.: 10-01500-G25-3052
 Material: CW617N-4MS

Produce for Ferro. S.A

hulowh



≤ 6	± 0.05
> 6-20	± 0.1
> 20-40	± 0.15
> 40-60	± 0.2
> 60-120	± 0.3
> 120-400	± 0.4

Stem
 Drawing No.: 10-01500-G25-4000
 Material: CW617N-4MS

hlonk

Produce for Ferro. S.A