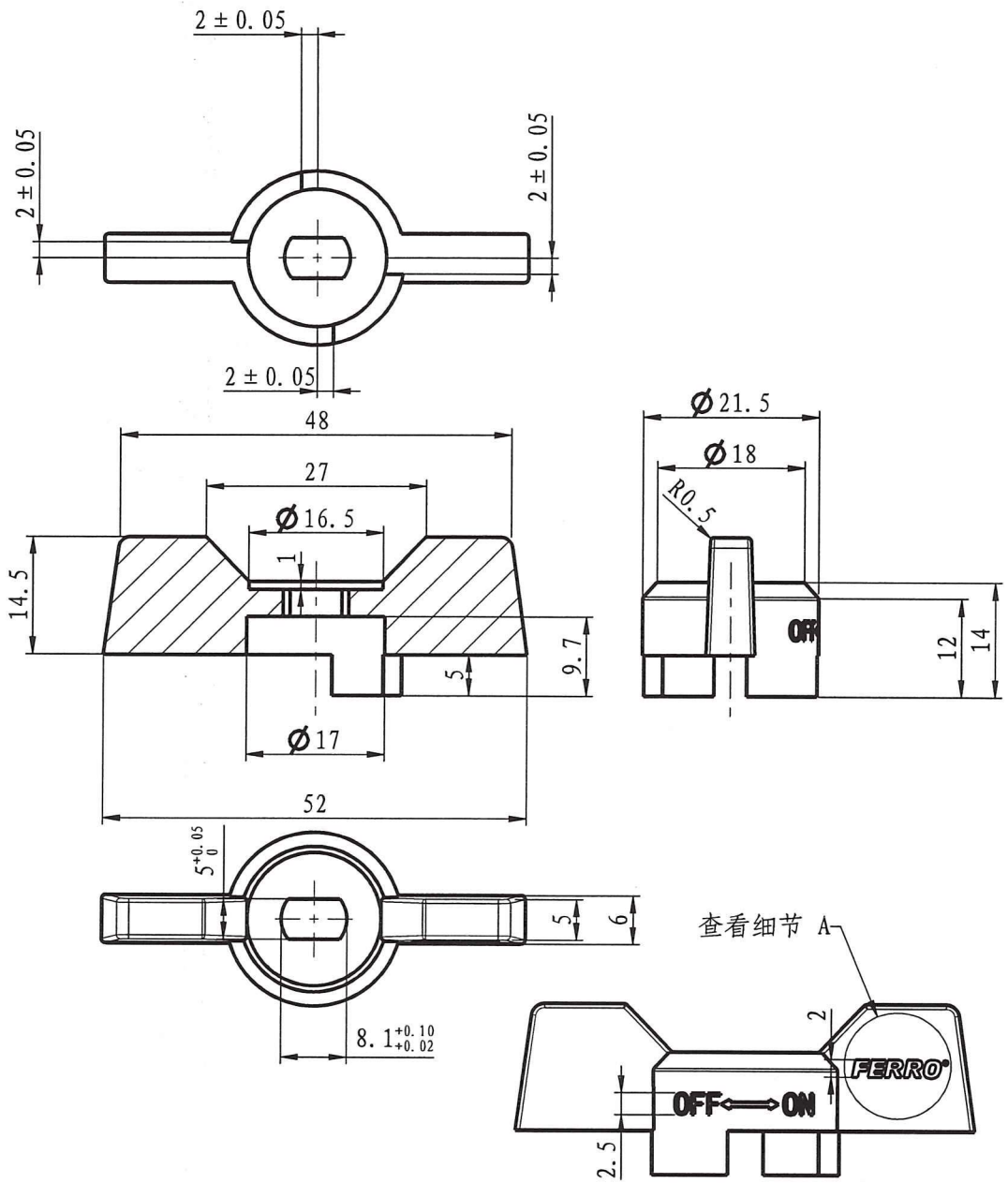


15	10-06500-G15-9028-1220	package		1		
14	10-06517-G15-21	O-ring	NBR	1	0.3	0.3
13	10-06500-G15-542M	fixing pipe	CW617N-4MS	1	31.5	31.5
12	10-06500-G15-0R28-1220	body	CW617N-4MS	1	51.6	51.6
11	10-06207-R15-5628	fixing nut	CW617N-4MS	1	23.7	23.7
10	10-05175-015-20	sealing seat	PTFE	2	0.7	1.4
9	10-01516-G15-22	gasket	PTFE	1	0.3	0.3
8	10-01500-G15-4000	stem	CW617N-4MS	1	9.6	9.6
7	10-01500-G15-3052	ball	CW617N-4MS	1	17.5	17.5
6	10-01500-G15-1R28	bonnet	CW617N-4MS	1	30.1	30
5	10-01407-R15-7663	rubber sleeve-blue	VMQ (硅胶)	1	0.2	0.2
4	10-01407-R15-7660	rubber sleeve-red	VMQ (硅胶)	1	0.2	0.2
3	10-01400-G15-6200	nut	stainless steel	1	2.7	2.7
2	10-01207-G15-7360-1220	handle	AL	1	10.6	10.6
1	10-01207-G15-5000	press nut	CW617N-4MS	1	2.7	2.7
No	Drawing No	Name	Material	QTY	Weight/g	
					pc	total

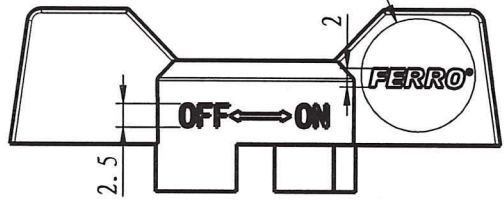
**KFCS1**  
**Drawing No.: 10-06500-G15-9028-1220**  
**Weight: 182g**  
 32-050 Skawina ul. Przemysłowa 7  
 REGON 356375388, NIP 944-20-51-648  
 (15)

Produce for Ferro. S.A

*inkon*



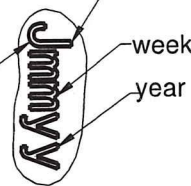
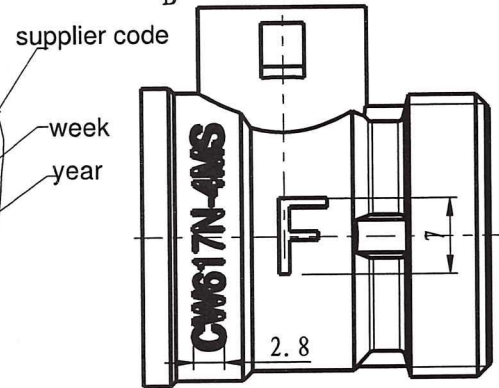
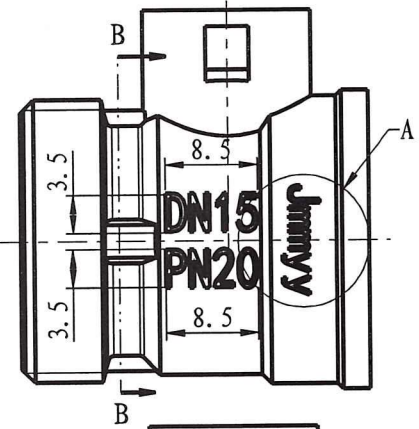
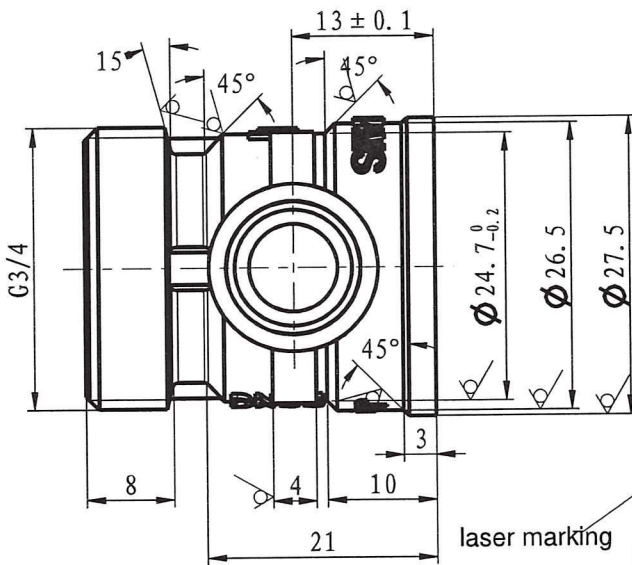
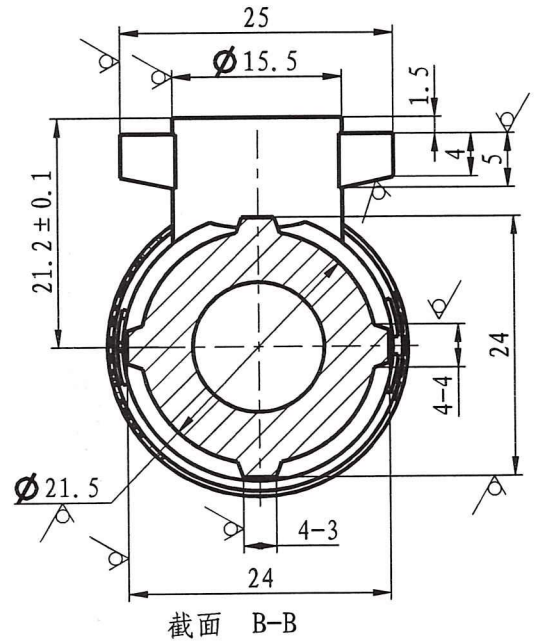
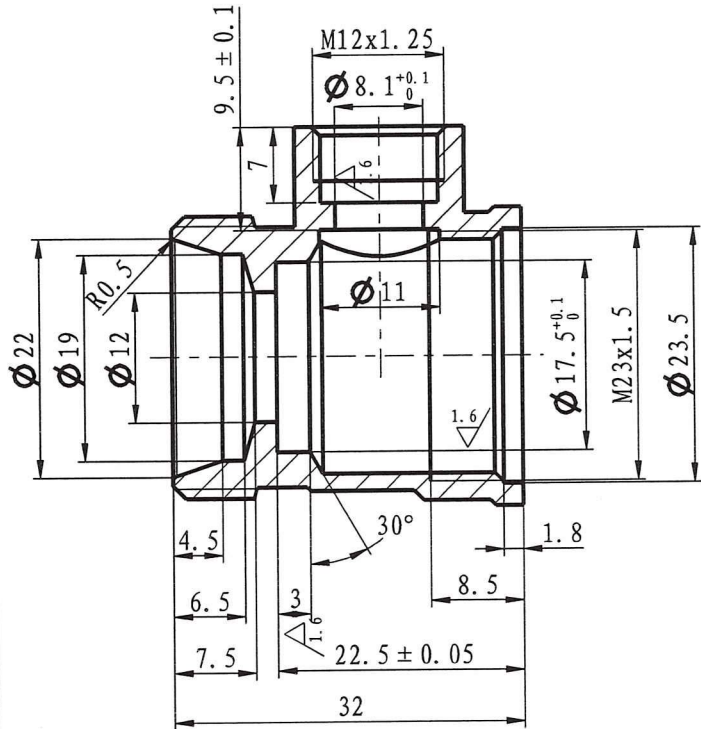
查看细节 A



Handle  
 Drawing No.: 10-01207-G15-7360-1220  
 Material: Aluminum

*h/low*

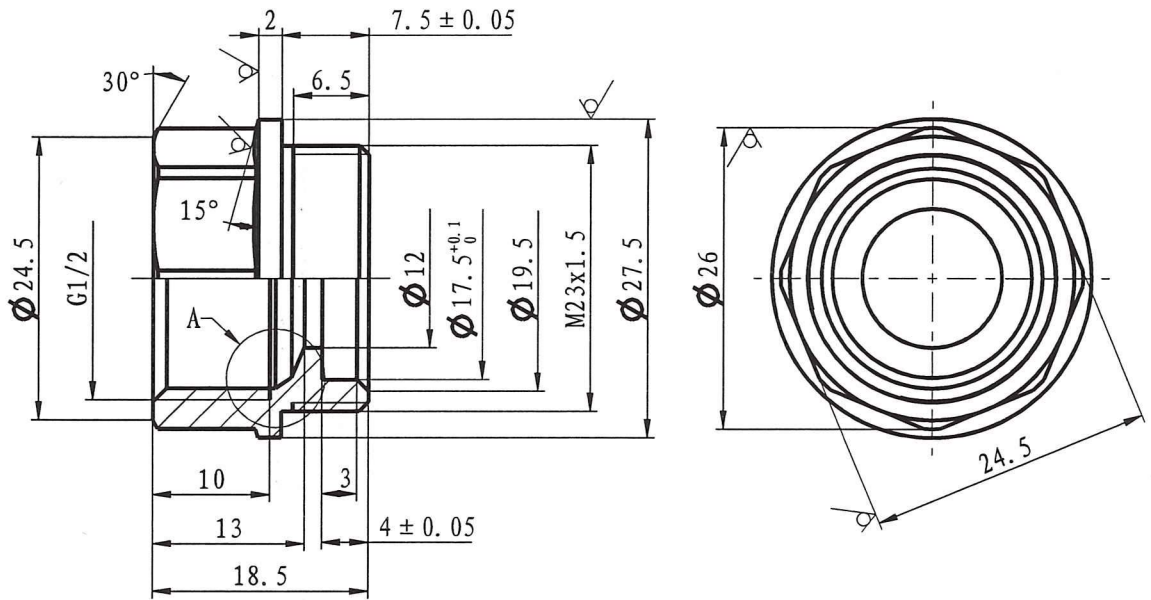
Produce for Ferro. S.A



Body  
 Drawing No.: 10-06500-G15-0R28-1220  
 Material: CW617n-4MS

*hls*

Produce for Ferro. S.A

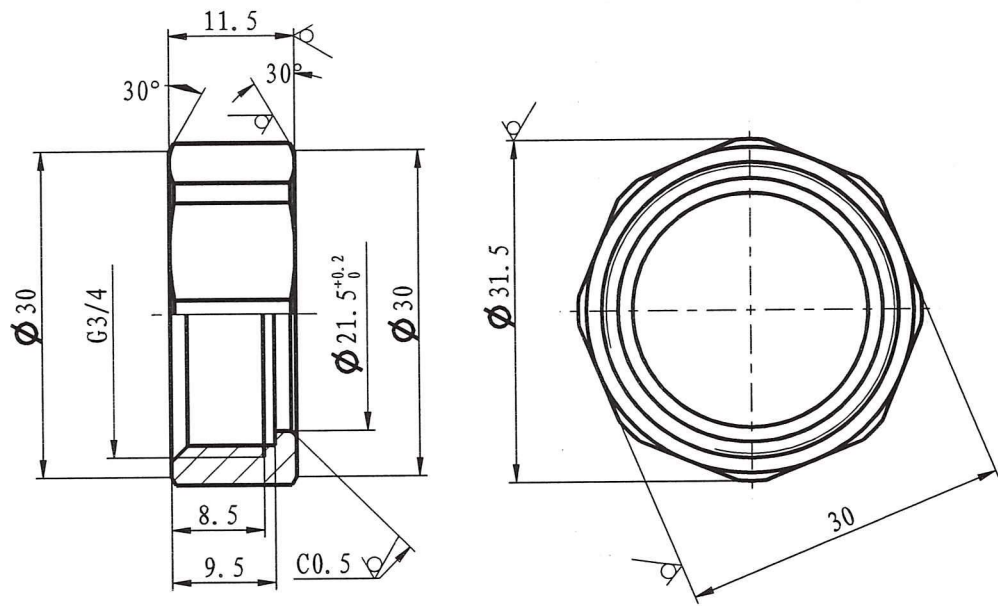


≤ 6	± 0.05
> 6-20	± 0.1
> 20-40	± 0.15
> 40-60	± 0.2
> 60-120	± 0.3
> 120-400	± 0.4

Bonnet  
 Drawing No.: 10-01500-G15-1R28  
 Material: CW617n-4MS

*hulowh*

Produce for Ferro. S.A



Fixing nut

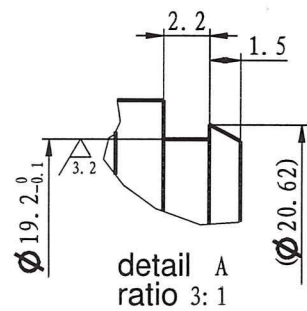
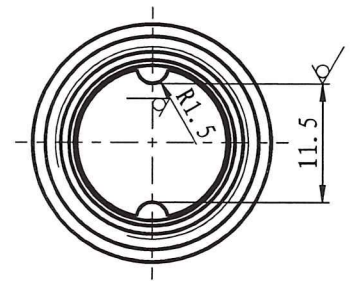
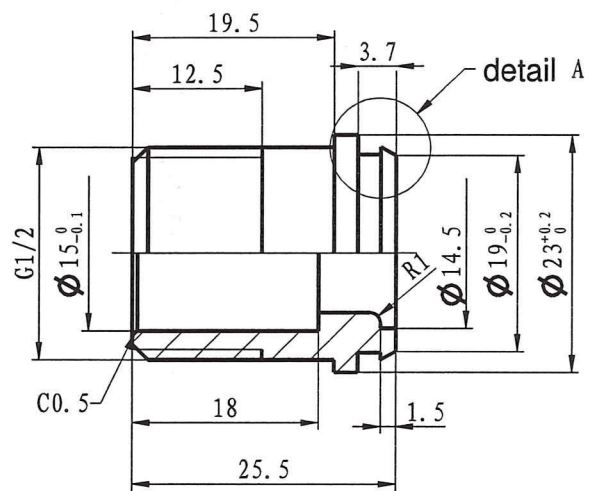
Drawing No.: 10-06207-R15-5628

Material: CW617n-4MS

*lulow*

Produce for Ferro. S.A

≤ 6	± 0.05
> 6-20	± 0.1
> 20-40	± 0.15
> 40-60	± 0.2
> 60-120	± 0.3
> 120-400	± 0.4

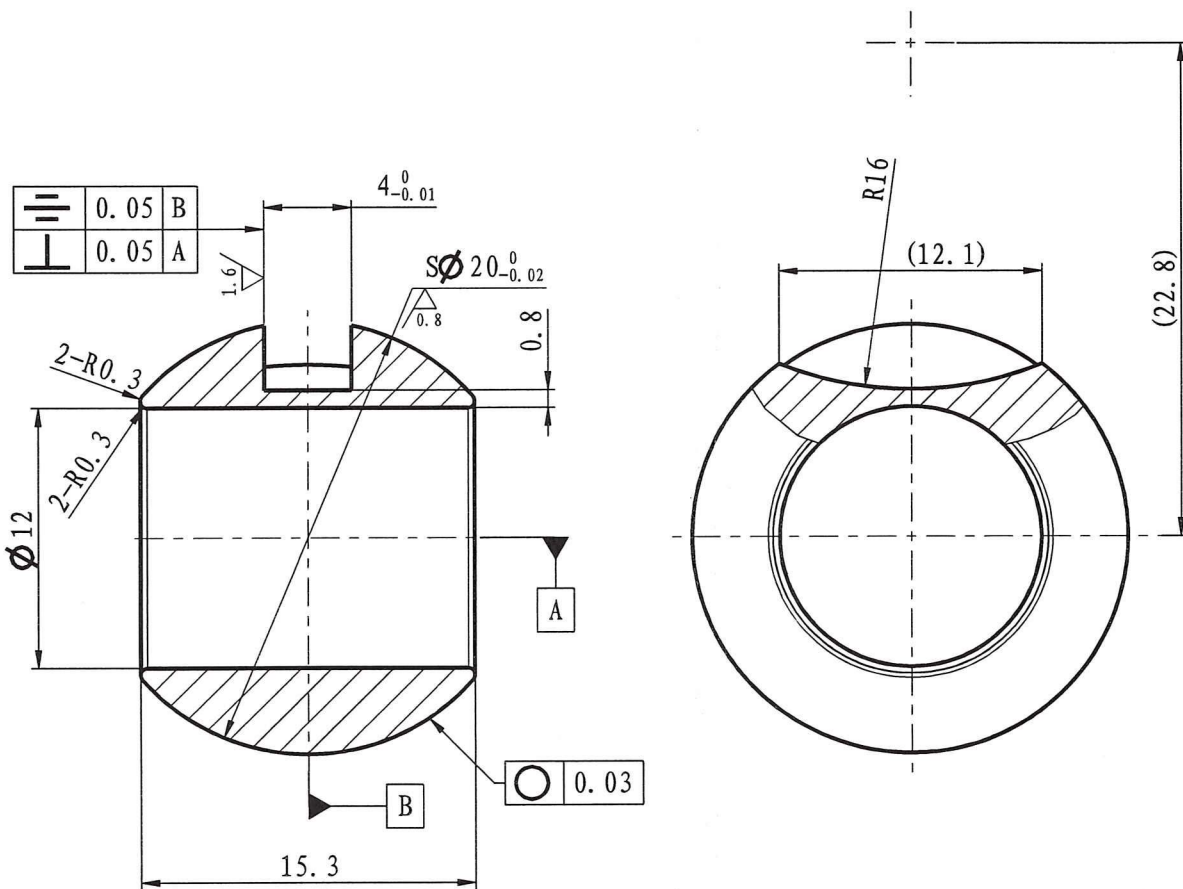


> 120-400	$\pm 0.4$
> 60-120	$\pm 0.3$
> 40-60	$\pm 0.2$
> 20-40	$\pm 0.15$
> 6-20	$\pm 0.1$
$\leq 6$	$\pm 0.05$

Fixing pipe  
 Drawing No.: 10-06500-G15-542M  
 Material: CW617n-4MS

*hubs*

Produce for Ferro. S.A

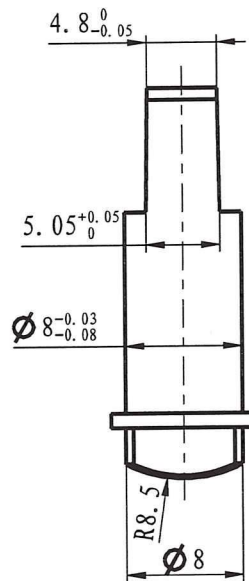
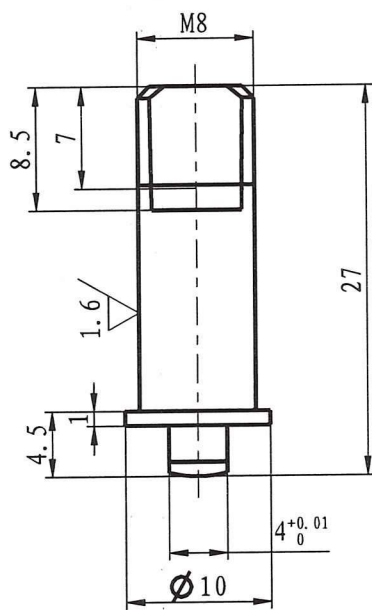


$\leq 6$	$\pm 0.05$
$> 6-20$	$\pm 0.1$
$> 20-40$	$\pm 0.15$
$> 40-60$	$\pm 0.2$
$> 60-120$	$\pm 0.3$
$> 120-400$	$\pm 0.4$

Ball  
 Drawing No.: 10-01500-G15-3052  
 Material: CW617n-4MS

*Inch*

Produce for Ferro. S.A



≤ 6	> 6-20	> 20-40	> 40-60	> 60-120	> 120-400
± 0.05	± 0.1	± 0.15	± 0.2	± 0.3	± 0.4

Produce for Ferro. S.A

Stem

Drawing No.: 10-01500-G15-4000

Material: CW617n-4MS

*Handwritten signature*