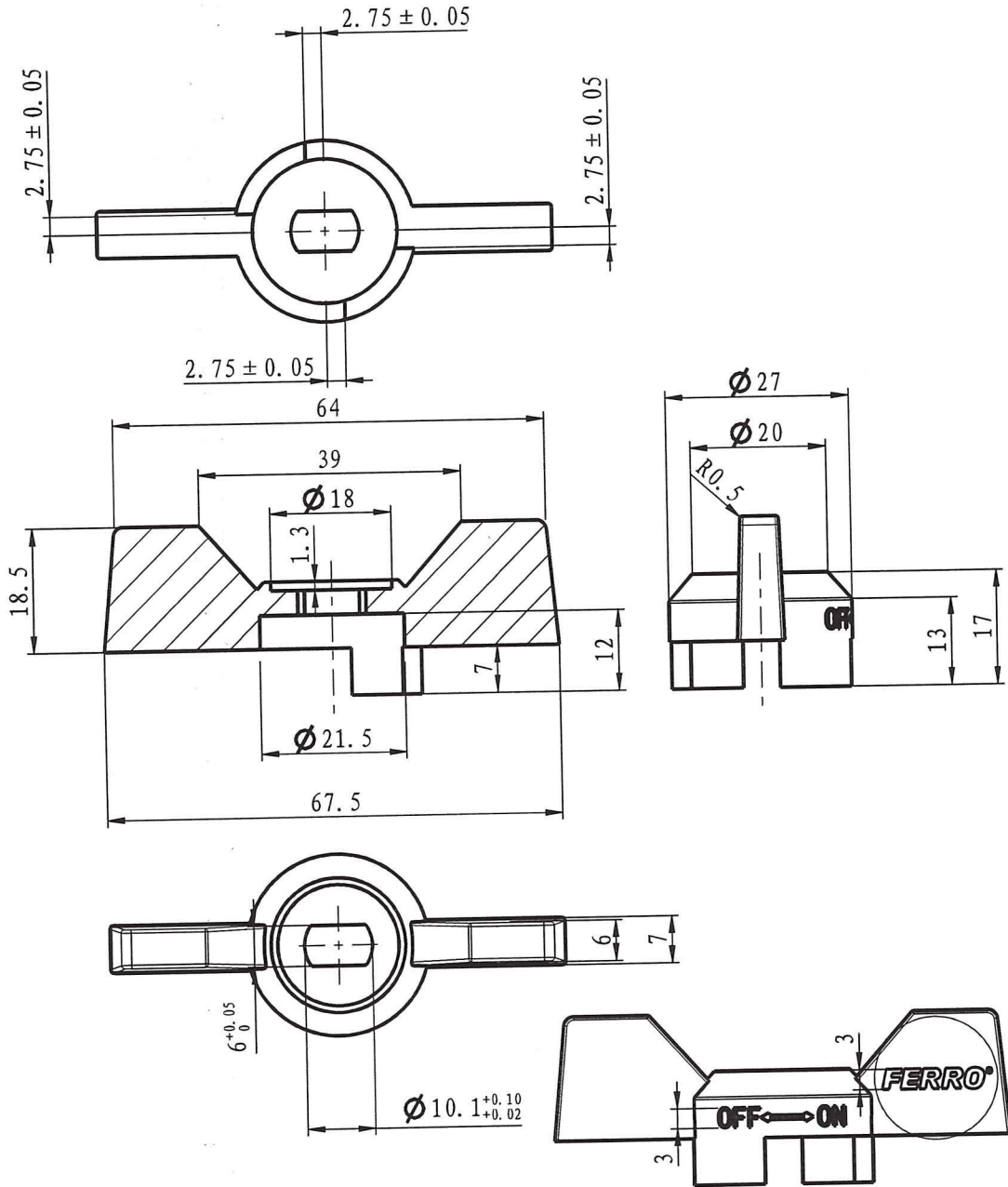


12	10-01501-G25-9028-1220	package		1		
11	10-01516-G25-22	gasket	PTFE	1	0.5	0.5
10	10-01500-G25-4000	stem	CW617N-4MS	1	18.4	18.3
9	10-01500-G25-3052	ball	CW617N-4MS	1	71.8	71.7
8	10-01500-G25-20	sealing seat	PTFE	2	1.8	3.6
7	10-01500-G25-1R28	bonnet	CW617N-4MS	1	70.2	70.2
6	10-01500-G25-0R28-1220	body	CW617N-4MS	1	126.6	126.6
5	10-01407-R40-7663	rubber sleeve-blue	VMQ (硅胶)	1	0.4	0.4
4	10-01407-R40-7660	rubber sleeve-red	VMQ (硅胶)	1	0.4	0.4
3	10-01207-G25-7360-1220	handle	AL	1	20.5	20.5
2	10-01207-G25-5000	press nut	CW617N-4MS	1	3.7	3.7
1	10-01029-N25-6200	nut	stainless steel	1	4.8	4.8
No	Drawing No	Name	Material	QTY	pc	total
					Weight/g	

KFCM3
 Drawing No.: 10-01501-G25-CP28-1220
 Weight: 321g
"FERRO" S.A.
 32-050 Skawina ul. Przemysłowa 7
 REGON 358275368. NIP 944-20-51-648

Wolke

Produce for Ferro. S.A



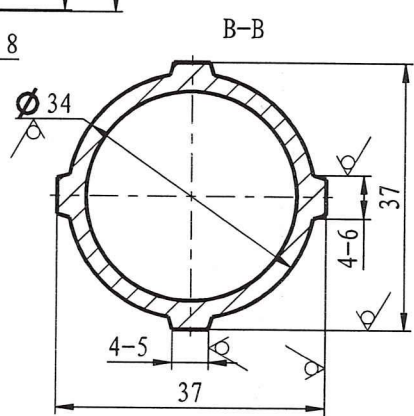
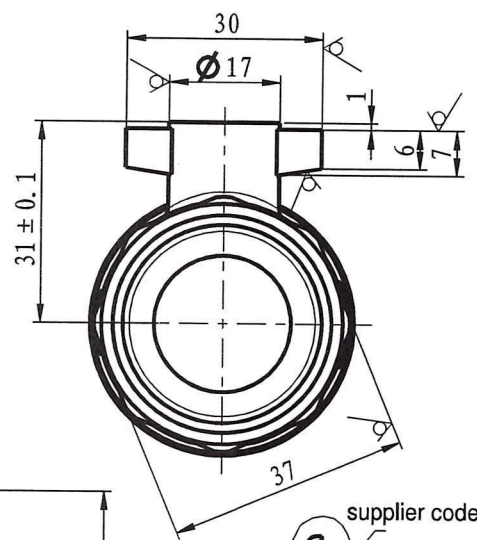
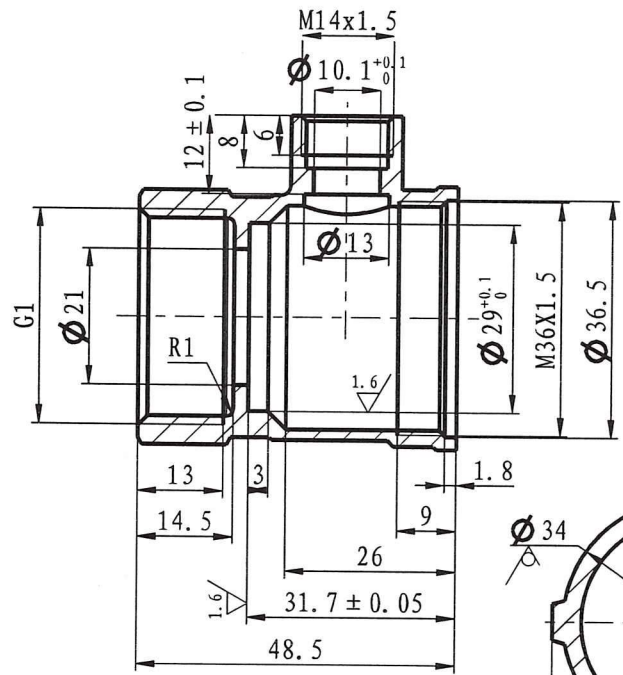
Handle

Drawing No.: 10-01207-G25-7360-1220

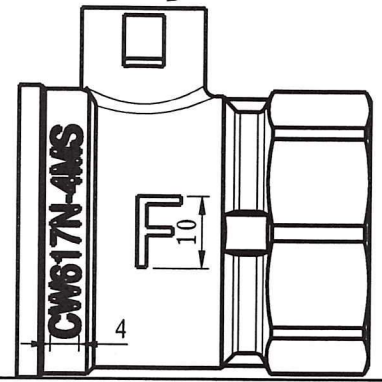
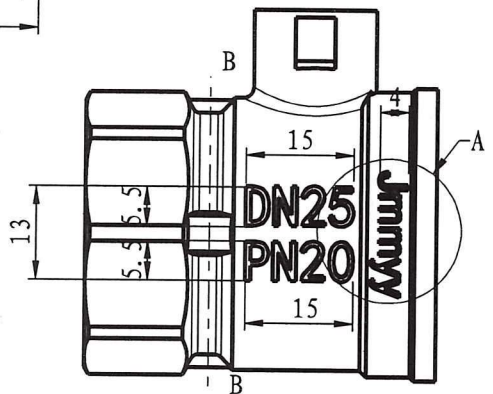
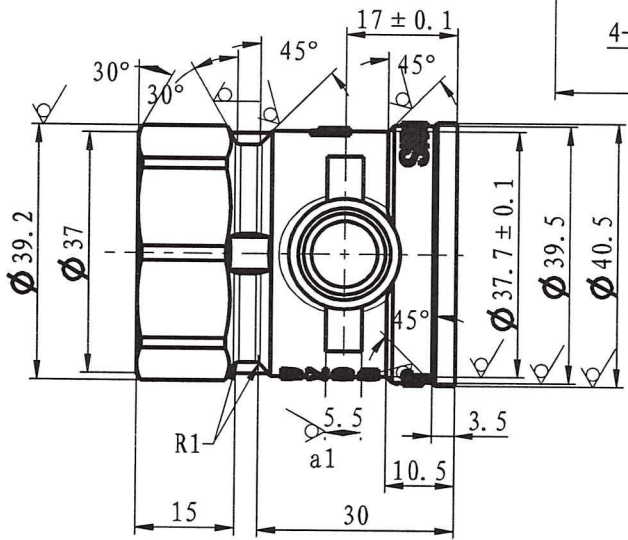
Material: Al

Intouch

Produce for Ferro. S.A



supplier code
Jimmy
 week
 year

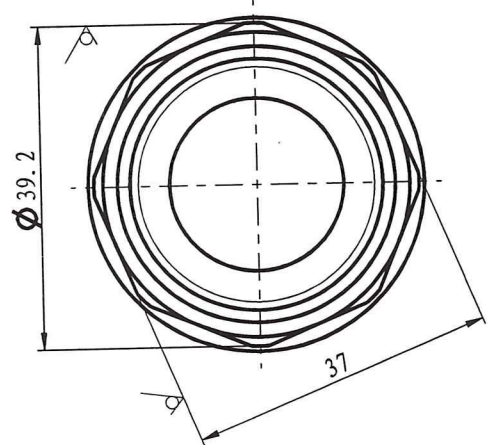
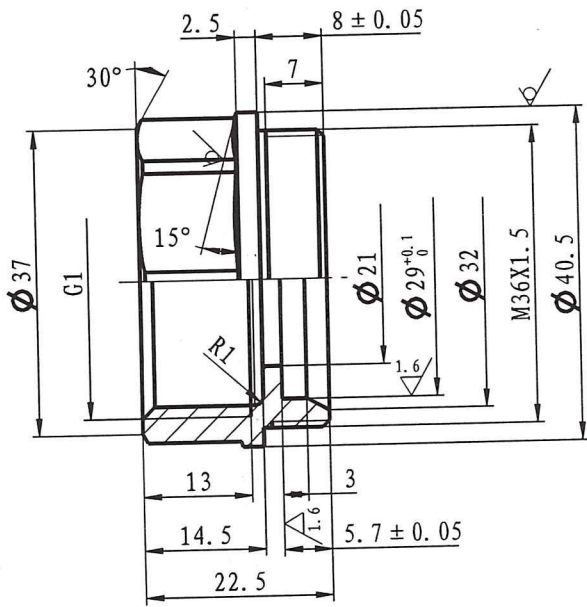


≤ 6	± 0.05
> 6-20	± 0.1
> 20-40	± 0.15
> 40-60	± 0.2
> 60-120	± 0.3
> 120-400	± 0.4

Body
 Drawing No.: 10-01500-G25-0R28-1220
 Material: CW617N-4MS

Produce for Ferro. S.A

h/and

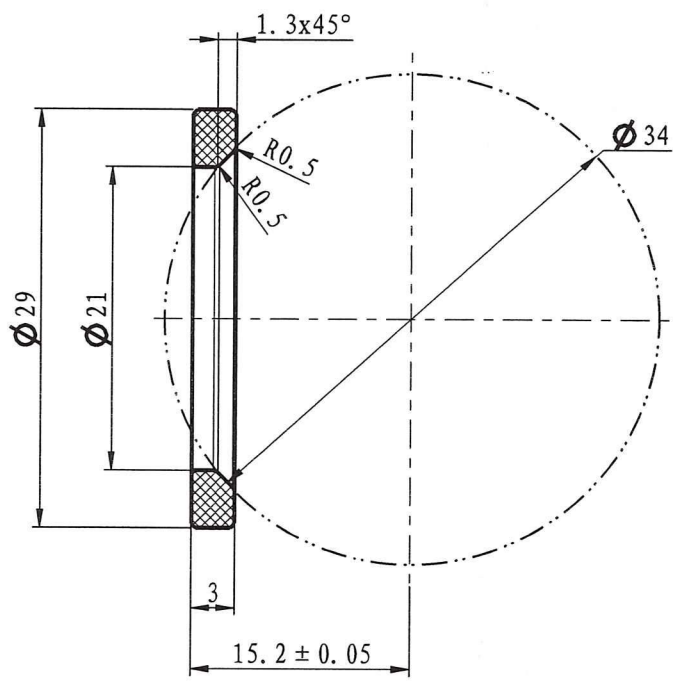


≤ 6	± 0.05
> 6-20	± 0.1
> 20-40	± 0.15
> 40-60	± 0.2
> 60-120	± 0.3
> 120-400	± 0.4

Bonnet
 Drawing No.: 10-01500-G25-1R28
 Material: CW617N-4MS

Wlowh

Produce for Ferro. S.A

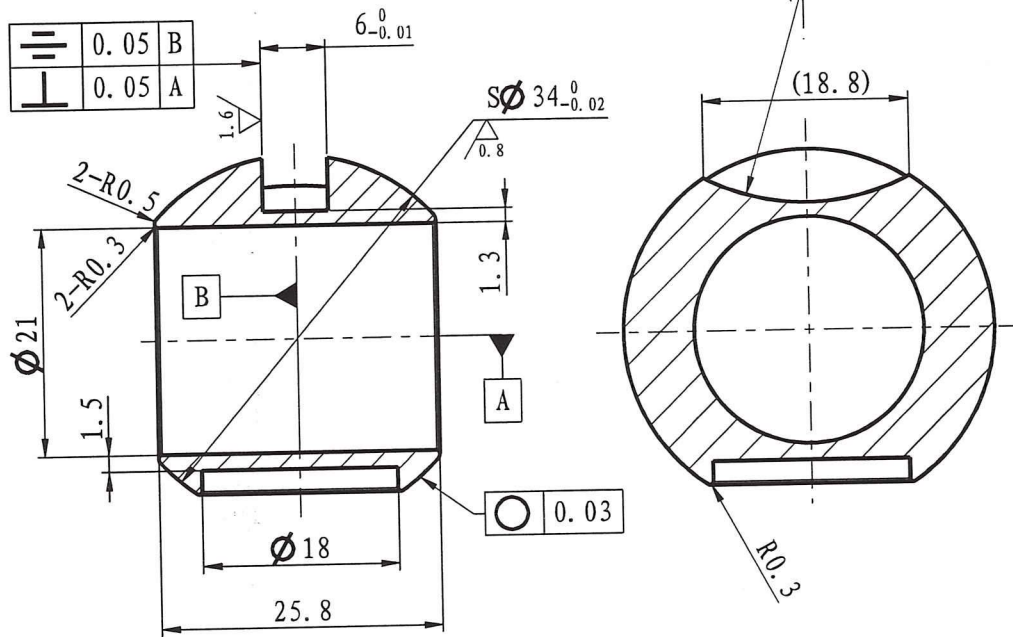


Sealing seat
 Drawing No.: 10-01500-G25-20
 Material: PTFE

h/low

Produce for Ferro. S.A

≤ 6	> 6-20	> 20-40	> 40-60	> 60-120	> 120-400
± 0.05	± 0.1	± 0.15	± 0.2	± 0.3	± 0.4

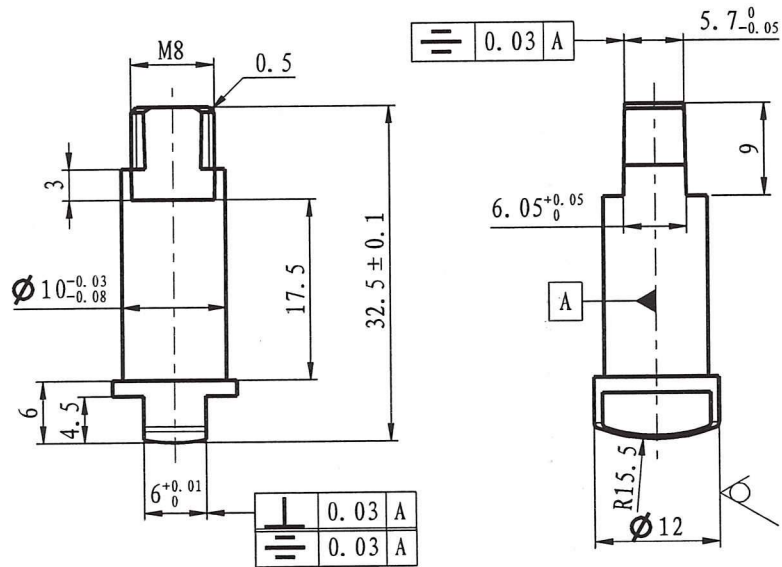


≤ 6	± 0.05
> 6-20	± 0.1
> 20-40	± 0.15
> 40-60	± 0.2
> 60-120	± 0.3
> 120-400	± 0.4

Produce for Ferro. S.A

Ball
 Drawing No.: 10-01500-G25-3052
 Material: CW617N-4MS

hulowh



< 6	± 0.05
> 6-20	± 0.1
> 20-40	± 0.15
> 40-60	± 0.2
> 60-120	± 0.3
> 120-400	± 0.4

Stem
 Drawing No.: 10-01500-G25-4000
 Material: CW617N-4MS

Produce for Ferro. S.A

Wlow