

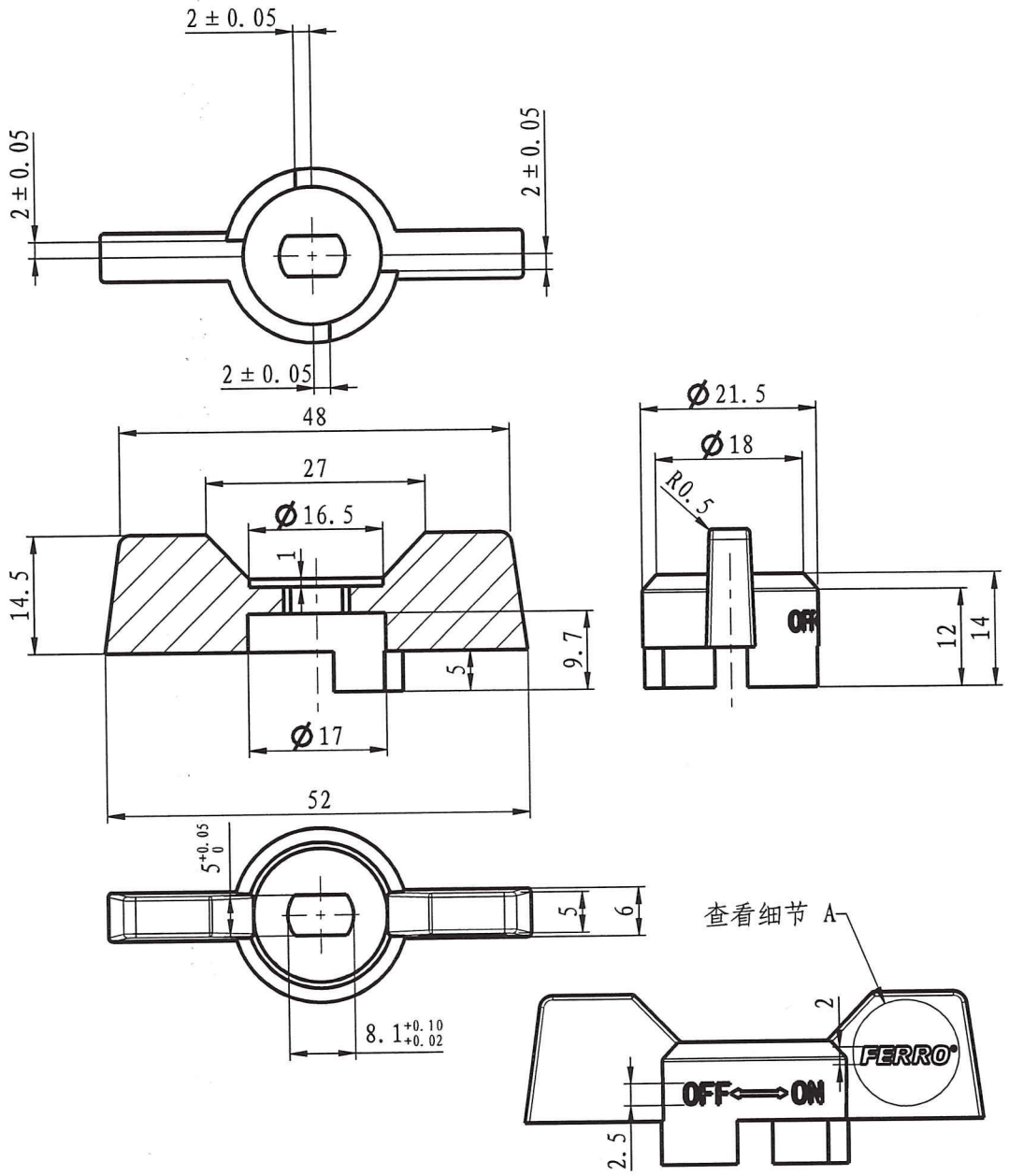
| | | | | | | |
|----|------------------------|--------------------|-----------------|-----|----------|-------|
| 12 | 10-01501-G20-9028-1220 | package | | 1 | | |
| 11 | 10-01516-G15-22 | gasket | PTFE | 1 | 0.3 | 0.3 |
| 10 | 10-01500-G20-3052 | ball | CW617N-4MS | 1 | 38.6 | 38.6 |
| 9 | 10-01500-G20-20 | sealing seat | PTFE | 2 | 1.2 | 2.4 |
| 8 | 10-01500-G20-1R28 | bonnet | CW617N-4MS | 1 | 48.5 | 48.5 |
| 7 | 10-01500-G20-0R28-1220 | body | CW617N-4MS | 1 | 90 | 90 |
| 6 | 10-01500-G15-4000 | stem | CW617N-4MS | 1 | 9.6 | 9.6 |
| 5 | 10-01407-R15-7663 | rubber sleeve-blue | VMQ (硅胶) | 1 | 0.2 | 0.2 |
| 4 | 10-01407-R15-7660 | rubber sleeve-red | VMQ (硅胶) | 1 | 0.2 | 0.2 |
| 3 | 10-01400-G15-6200 | nut | stainless steel | 1 | 2.7 | 2.7 |
| 2 | 10-01207-G15-7360-1220 | handle | AL | 1 | 10.6 | 10.6 |
| 1 | 10-01207-G15-5000 | press nut | CW617N-4MS | 1 | 2.7 | 2.7 |
| No | Drawing No | Name | Material | QTY | pc | total |
| | | | | | Weight/g | |

KFCM2
 Drawing No.: 10-01501-G20-CP28-1220
 Weight: 206g

"FERRO" S.A.
 32-050 Skawina ul. Przemysłowa 7
 REGON 356275398, NIP 944-20-51-648

Produce for Ferro. S.A

Wloch

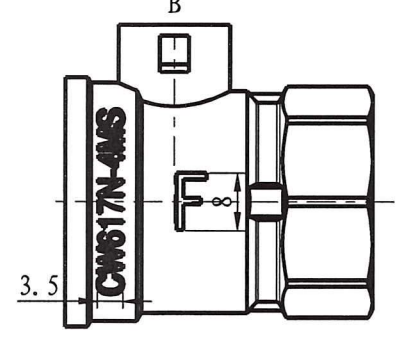
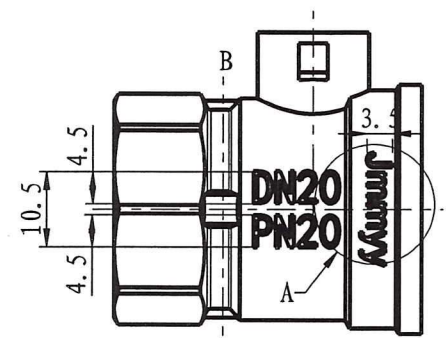
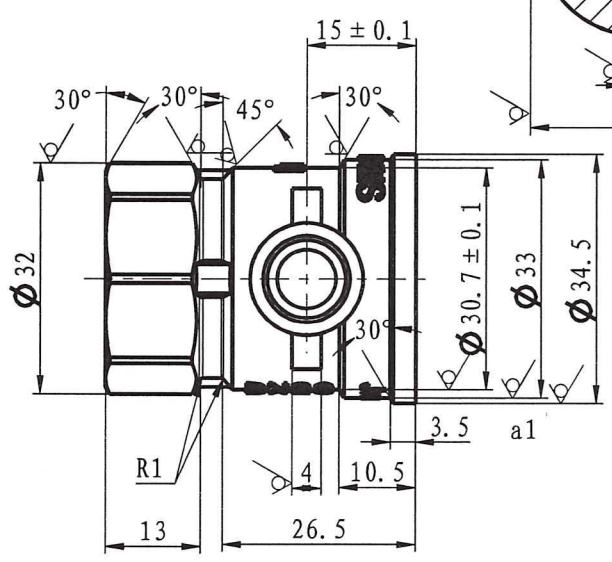
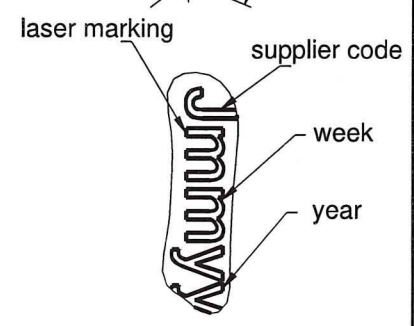
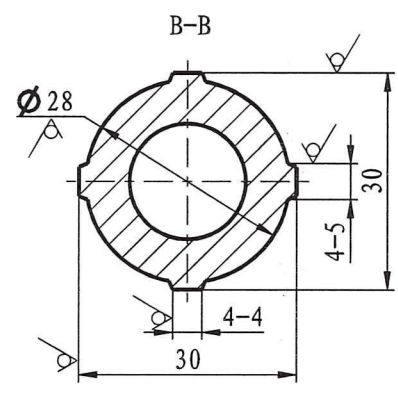
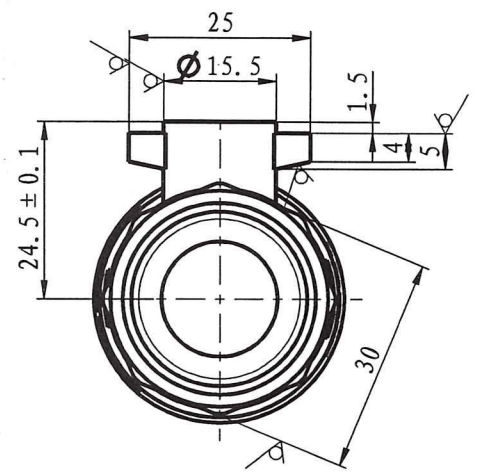
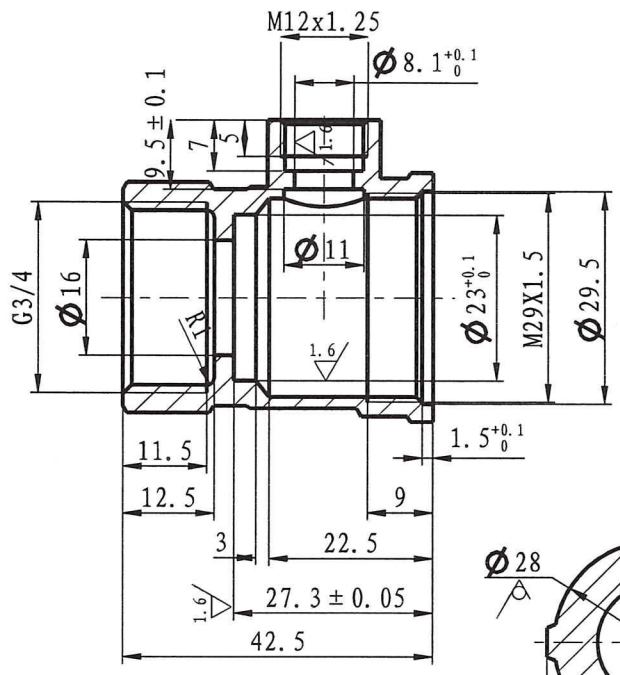


Handle
 Drawing No.: 10-01207-G15-7360-1220
 Material: Aluminum

hloak

Produce for Ferro. S.A

| | |
|-------------|------------|
| ≤ 6 | ± 0.05 |
| $> 6-20$ | ± 0.1 |
| $> 20-40$ | ± 0.15 |
| $> 40-60$ | ± 0.2 |
| $> 60-120$ | ± 0.3 |
| $> 120-400$ | ± 0.4 |

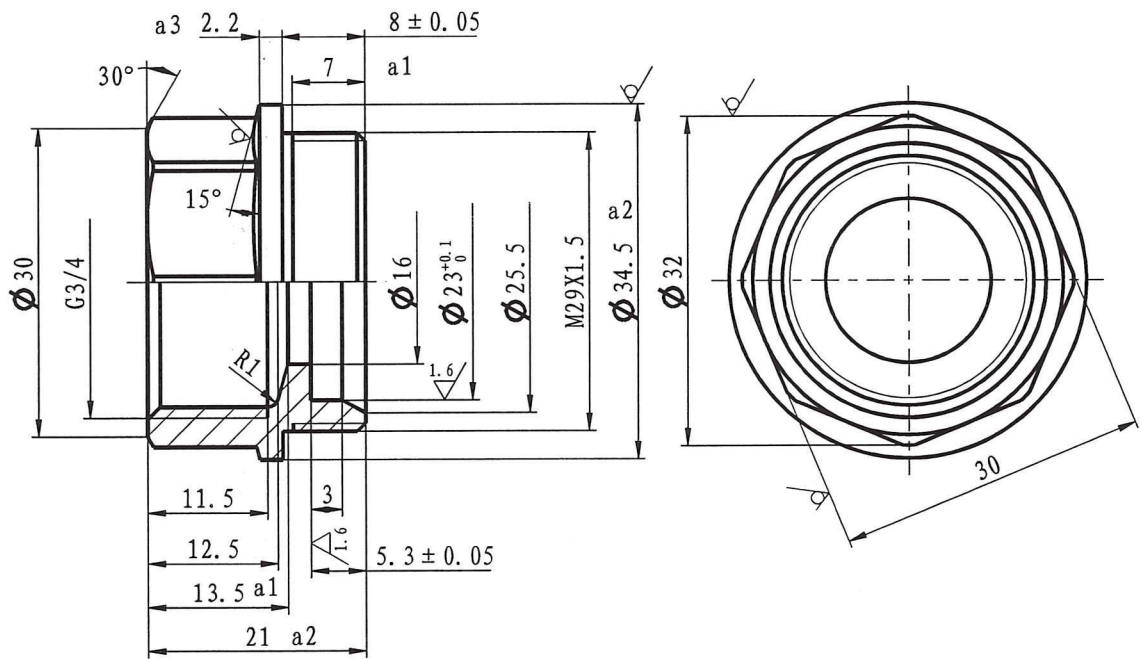


Body
 Drawing No.: 10-01500-G20-0R28-1220
 Material: CW617n-4MS

Produce for Ferro. S.A

hbold

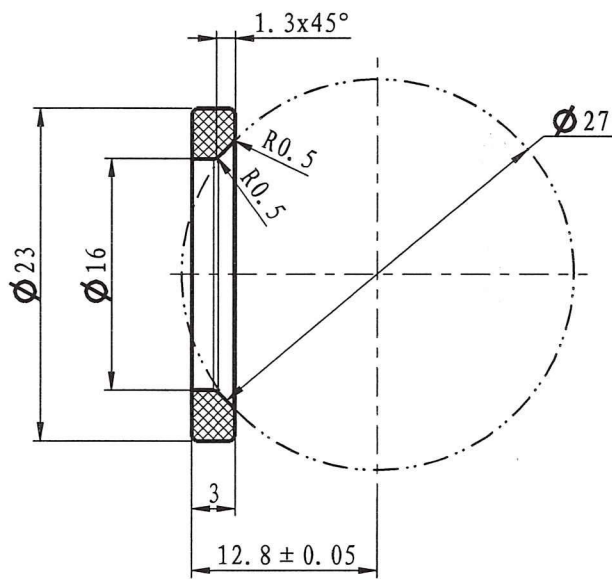
| | | | | | | | | | | | |
|----|-------|-------|------|--------|-------|--------|------|---------|------|----------|------|
| ≤6 | ±0.05 | >6-20 | ±0.1 | >20-40 | ±0.15 | >40-60 | ±0.2 | >60-120 | ±0.3 | >120-400 | ±0.4 |
|----|-------|-------|------|--------|-------|--------|------|---------|------|----------|------|



| | |
|-----------|--------|
| ≤ 6 | ± 0.05 |
| > 6-20 | ± 0.1 |
| > 20-40 | ± 0.15 |
| > 40-60 | ± 0.2 |
| > 60-120 | ± 0.3 |
| > 120-400 | ± 0.4 |

Produce for Ferro. S.A

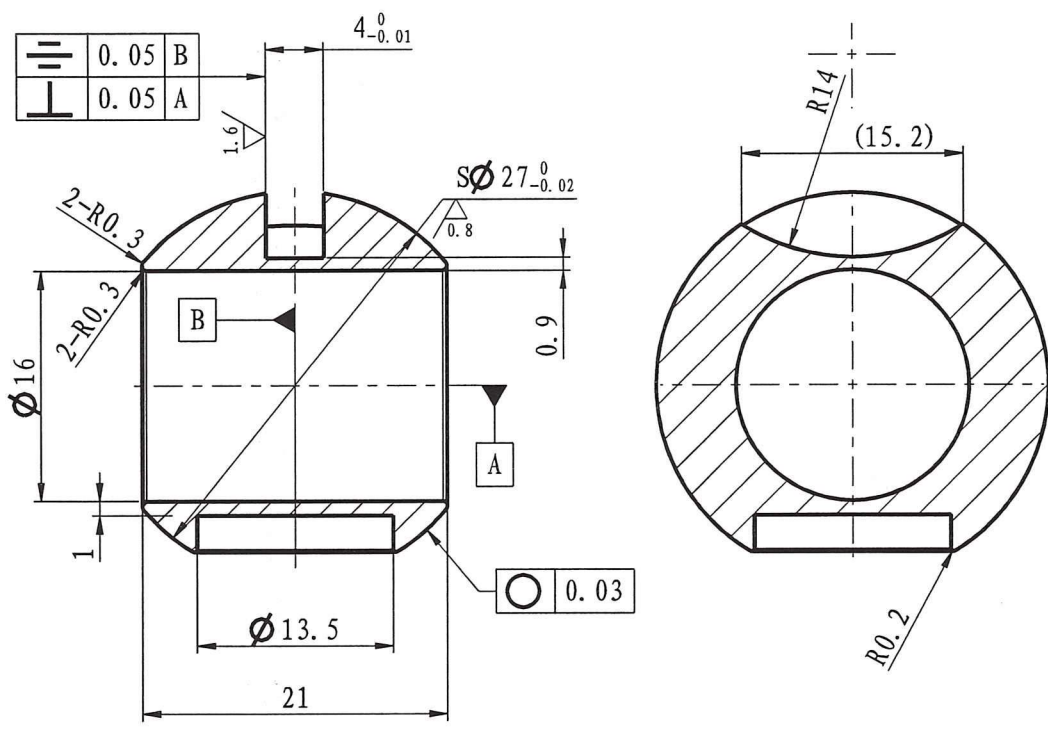
Bonnet
 Drawing No.: 10-01500-G20-1R28
 Material: CW617n-4MS



Sealing seat
 Drawing No.: 10-01500-G20-20
 Material: PTFE

hnlou

Produce for Ferro. S.A

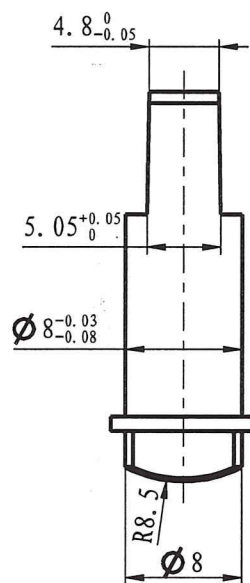
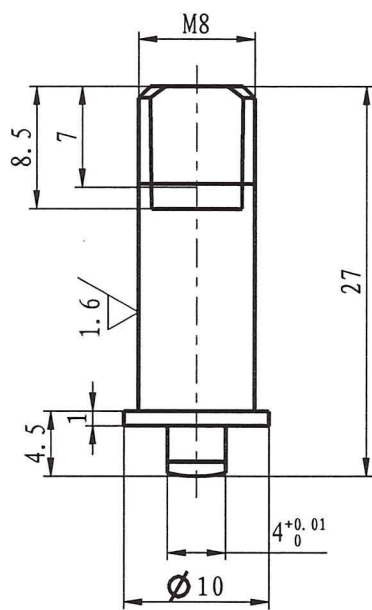


| | |
|-----------|-------|
| > 120-400 | ±0.4 |
| > 60-120 | ±0.3 |
| > 40-60 | ±0.2 |
| > 20-40 | ±0.15 |
| > 6-20 | ±0.1 |
| ≤ 6 | ±0.05 |

Ball
 Drawing No.: 10-01500-G20-3052
 Material: CW617n-4MS

Produce for Ferro. S.A

Wlank



| | |
|-----------|--------|
| ≤ 6 | ± 0.05 |
| > 6-20 | ± 0.1 |
| > 20-40 | ± 0.15 |
| > 40-60 | ± 0.2 |
| > 60-120 | ± 0.3 |
| > 120-400 | ± 0.4 |

Stem

Drawing No.: 10-01500-G15-4000

Material: CW617n-4MS

Intol

Produce for Ferro. S.A