

12	10-03500-G50-902N-1220	package		1			
11	10-07029-041-22	gasket	PTFE	1	1.2	1.2	
10	10-02500-G50-1R2N	bonnet	CW617N-4MS	1	319	319	
9	10-01500-G50-3052	ball	CW617N-4MS	1	253	253	
8	10-01500-G50-20	sealing seat	PTFE	2	8	16	
7	10-01500-G50-0R28-1220	body	CW617N-4MS	1	438.7	438.7	
6	10-01500-G40-4000	stem	CW617N-4MS	1	49.6	49.6	
5	10-01407-R40-7663	rubber sleeve-blue	VMQ (硅胶)	1	0.4	0.4	
4	10-01407-R40-7660	rubber sleeve-red	VMQ (硅胶)	1	0.4	0.4	
3	10-01407-G40-6200	nut	stainless steel	1	7.2	7.2	
2	10-01207-G40-700D-1220	handle	Q235	1	155	155	
1	10-01207-G40-5000	press nut	CW617N-4MS	1	10	10	
No	Drawing No	Name	Material	QTY	pc	total	
					Weight/g		

KFC61

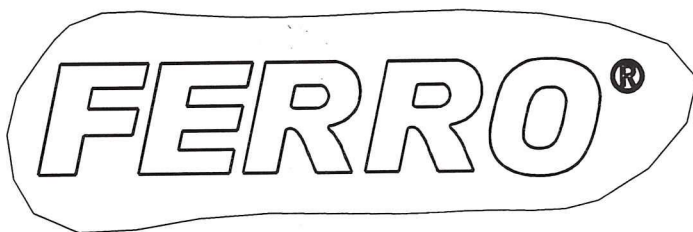
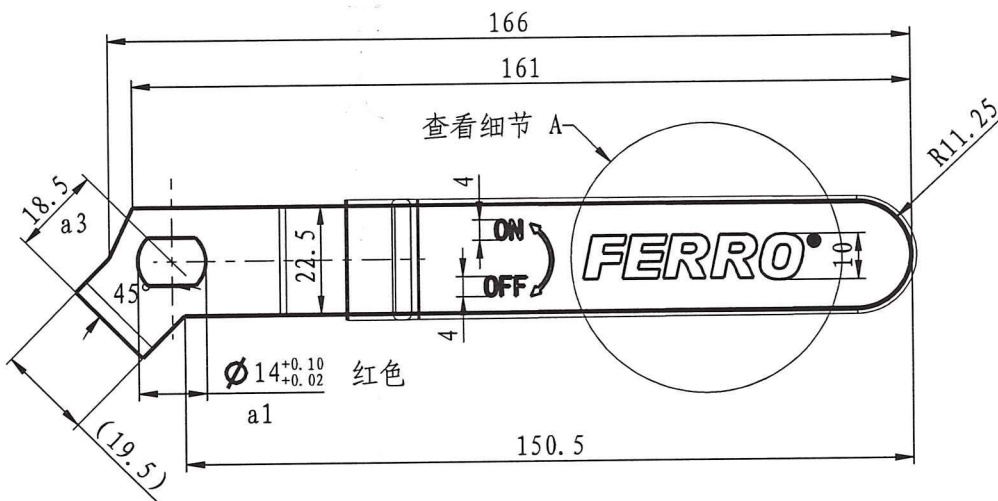
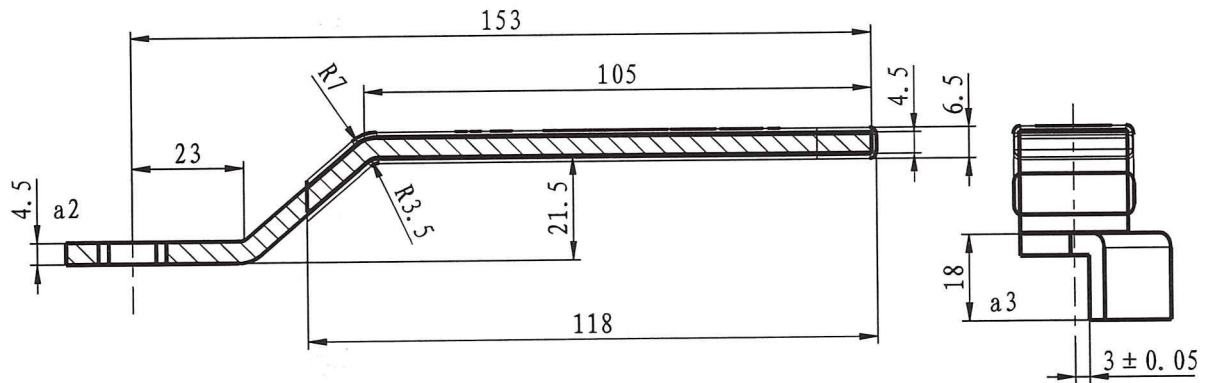
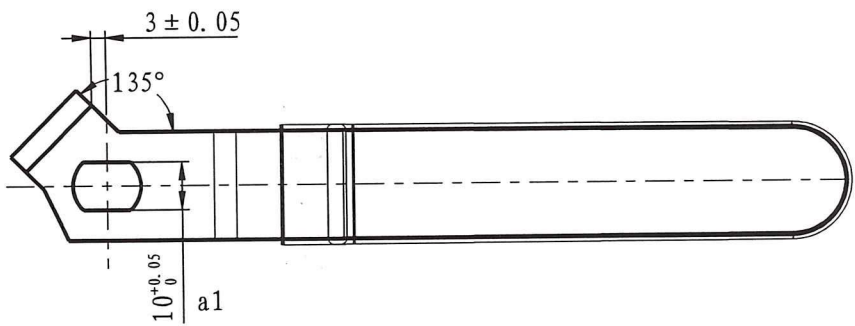
Drawing No.: 10-03500-G50-CP2N-1220

Weight: 1251g

FERRO S.A.
32-050 Skawina ul. Przemysłowa 7
REGON 353275368, NIP 944-20-51-648

Produce for Ferro. S.A

Handwritten signature



Handle

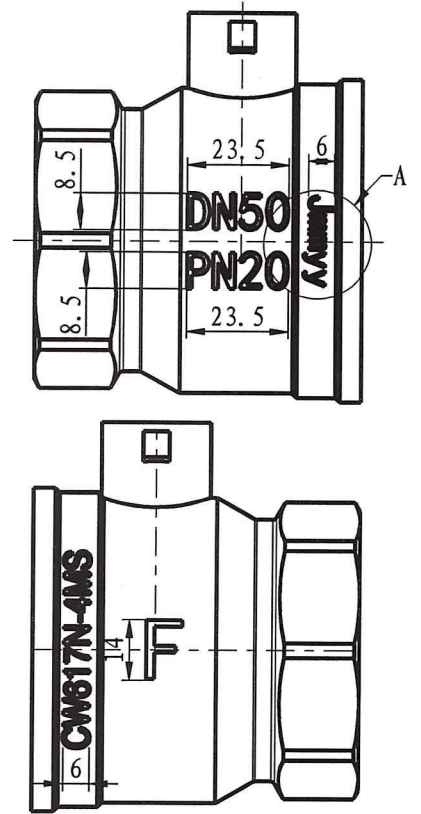
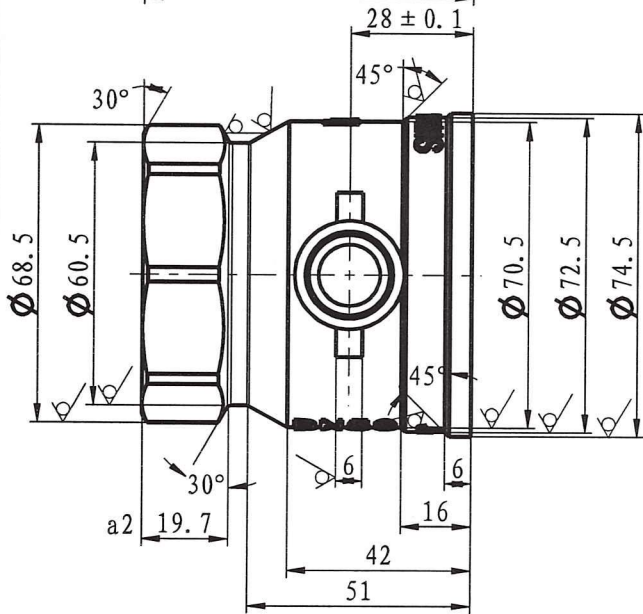
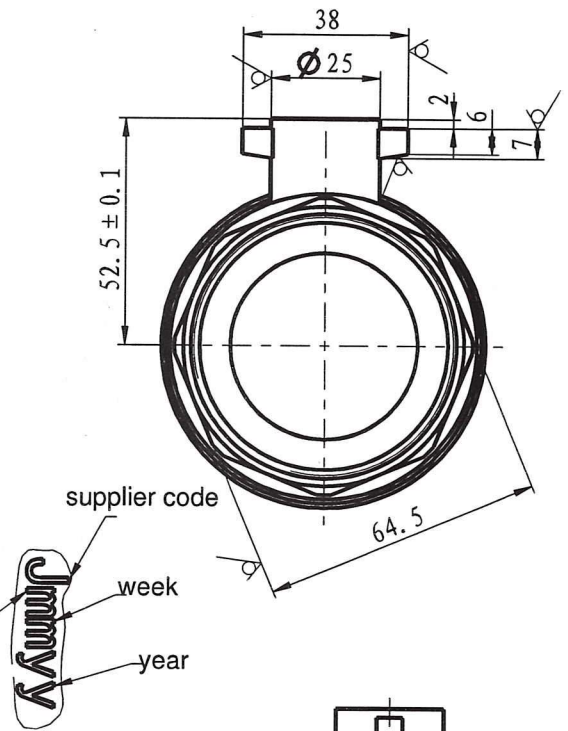
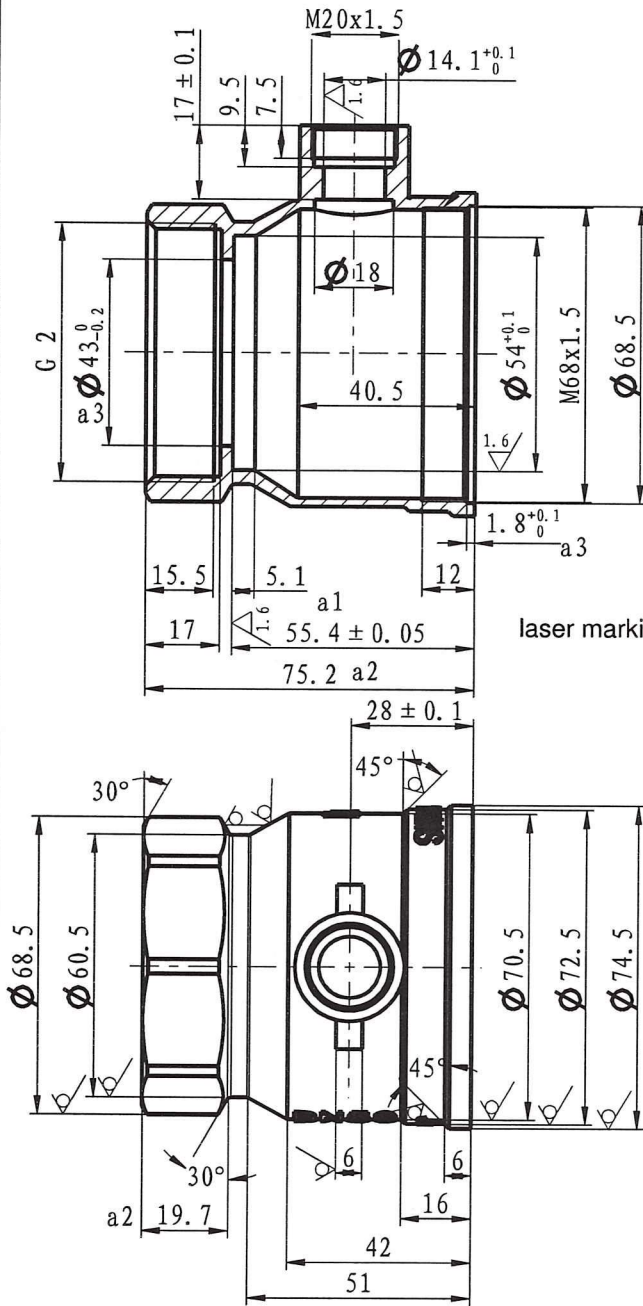
Drawing No.: 10-01207-G40-700D-1220

Material: Q235

Handwritten signature

Produce for Ferro. S.A

≤ 6	± 0.05
> 6-20	± 0.1
> 20-40	± 0.15
> 40-60	± 0.2
> 60-120	± 0.3
> 120-400	± 0.4

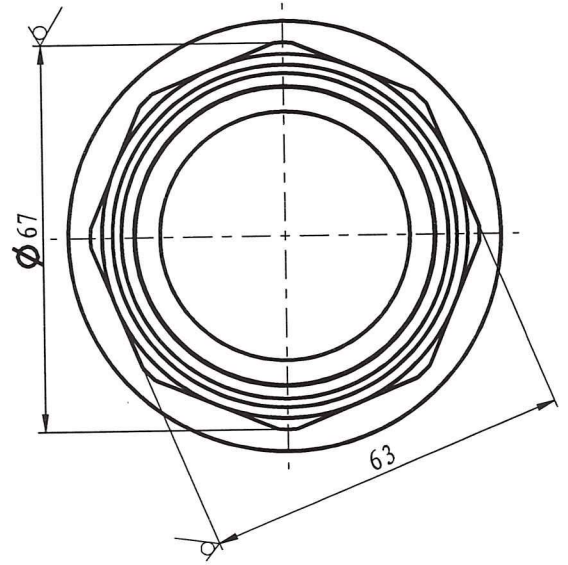
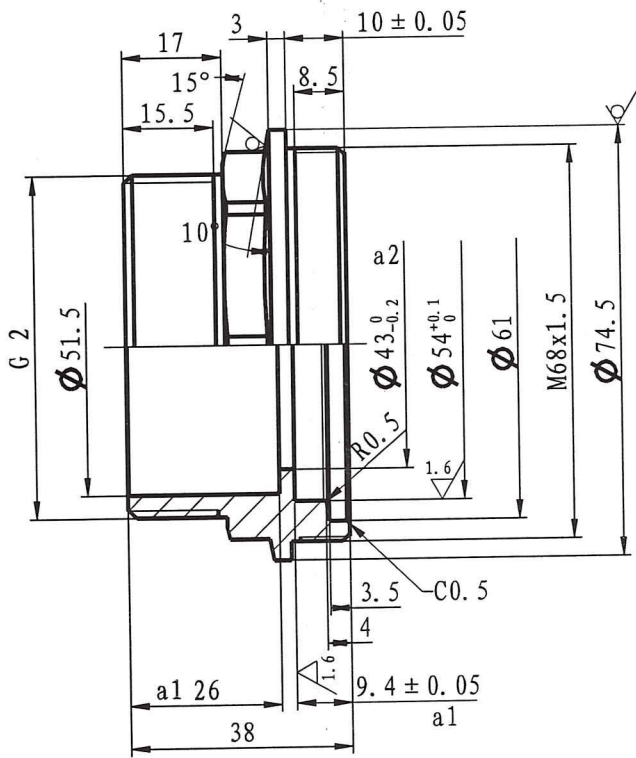


≤ 6	± 0.05
> 6-20	± 0.1
> 20-40	± 0.15
> 40-60	± 0.2
> 60-120	± 0.3
> 120-400	± 0.4

Body
 Drawing No.: 10-01500-G50-0R28-1220
 Material: CW617N-4MS

huloull

Produce for Ferro. S.A



Bonnet

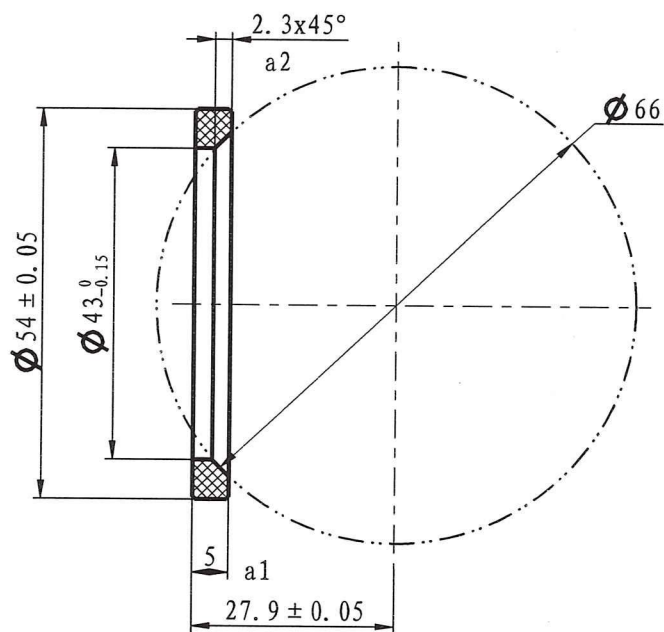
Drawing No.: 10-02500-G50-1R2N

Material: CW617N-4MS

Handwritten signature

Produce for Ferro. S.A

≤ 6	± 0.05
> 6-20	± 0.1
> 20-40	± 0.15
> 40-60	± 0.2
> 60-120	± 0.3
> 120-400	± 0.4

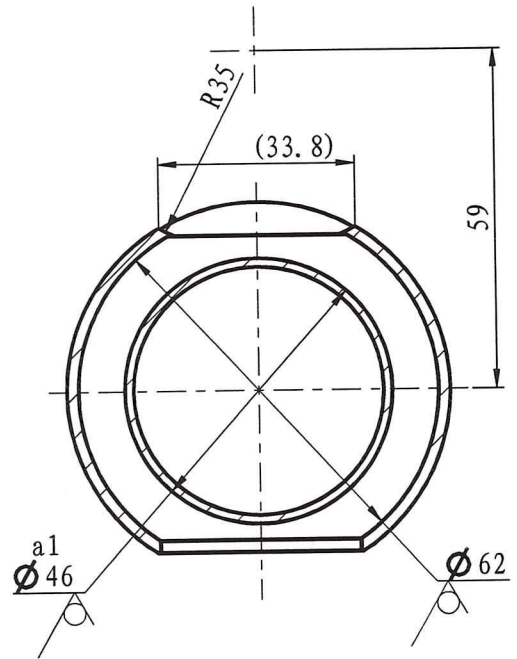
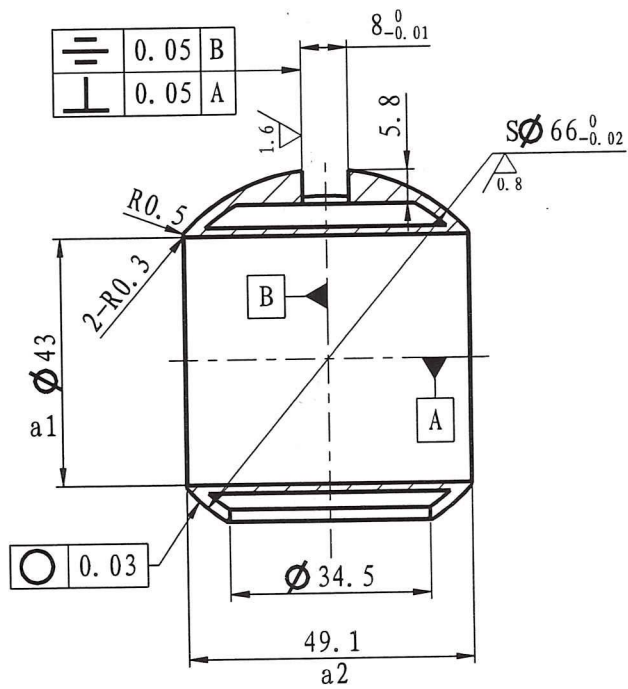


Sealing seat
 Drawing No.: 10-01500-G50-20
 Material: PTFE

Intank

Produce for Ferro. S.A

≤ 6	< 6-20	> 20-40	> 40-60	> 60-120	> 120-400
± 0.05	± 0.1	± 0.15	± 0.2	± 0.3	± 0.4



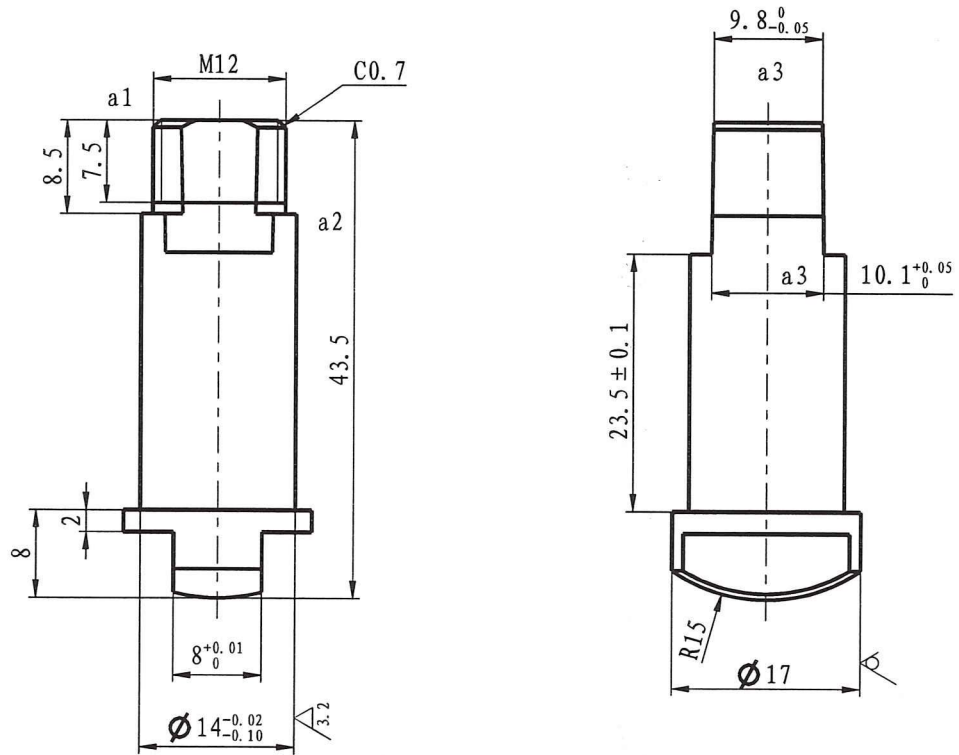
Ball

Drawing No.: 10-01500-G50-3052

Material: CW617N-4MS

Intouch

Produce for Ferro. S.A



≤ 6	± 0.05
$> 6-20$	± 0.1
$> 20-40$	± 0.15
$> 40-60$	± 0.2
$> 60-120$	± 0.3
$> 120-400$	± 0.4

Stem

Drawing No.: 10-01500-G40-4000

Material: CW617N-4MS

Produce for Ferro. S.A

Inloub