

12	10-01500-G40-9028-1220	package		1			
11	10-07029-041-22	gasket	PTFE	1	1.2	1.2	
10	10-01500-G40-4000	stem	CW617N-4MS	1	49.6	49.6	
9	10-01500-G40-3052	ball	CW617N-4MS	1	145	145	
8	10-01500-G40-20	sealing seat	PTFE	2	5.3	10.6	
7	10-01500-G40-1R28	bonnet	CW617N-4MS	1	154.3	154.3	
6	10-01500-G40-0R28-1220	body	CW617N-4MS	1	312.8	312.8	
5	10-01407-R40-7663	rubber sleeve-blue	VMQ (硅胶)	1	0.4	0.4	
4	10-01407-R40-7660	rubber sleeve-red	VMQ (硅胶)	1	0.4	0.4	
3	10-01407-G40-6200	nut	stainless steel	1	7.2	7.2	
2	10-01207-G40-700D-1220	handle	Q235	1	155	155	
1	10-01207-G40-5000	press nut	CW617N-4MS	1	10	10	
No	Drawing No	Name	Material	QTY	pc	total	
					Weight/g		

KFC5

Drawing No.: 10-01500-G40-GR28-1220

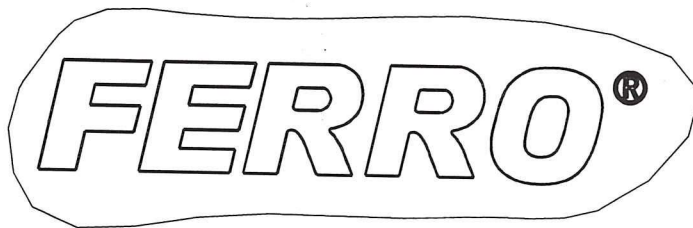
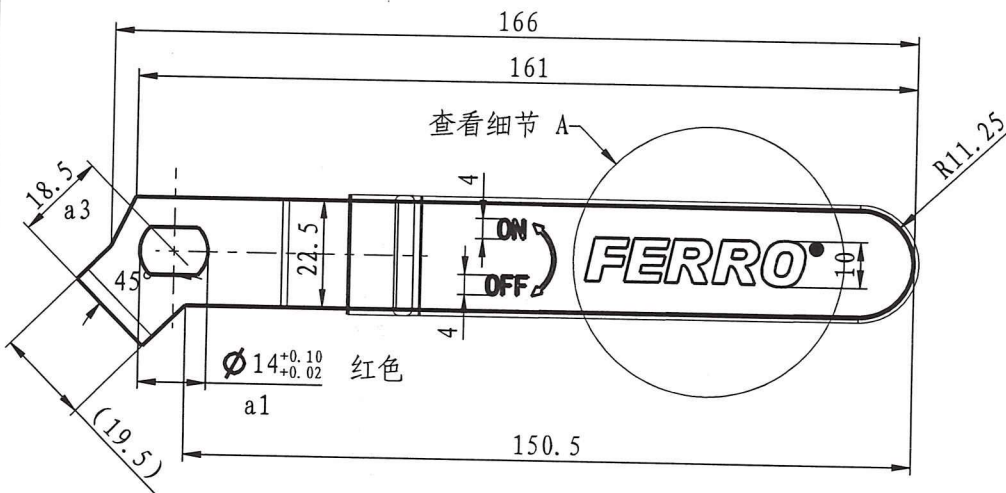
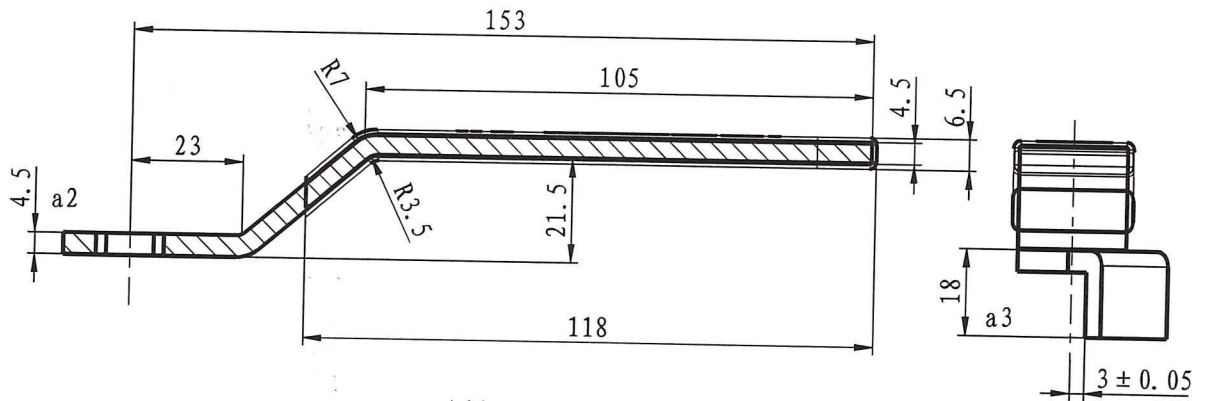
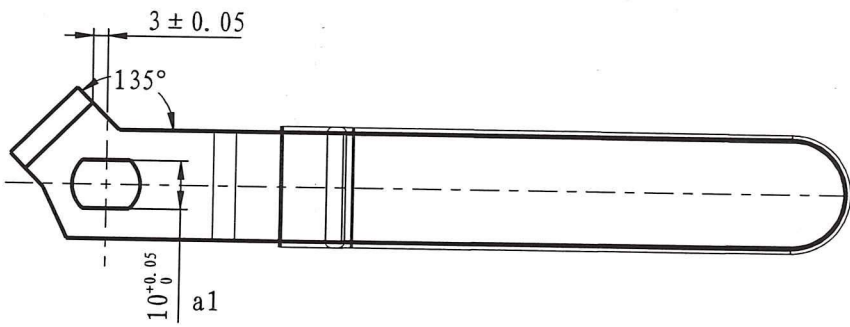
Weight: 846.5g

32-050 Skawina ul. Przemysłowa 7  
REGON 358275388, NIP 944-20-51-648

(15)

Produce for Ferro. S.A

*Włoch*

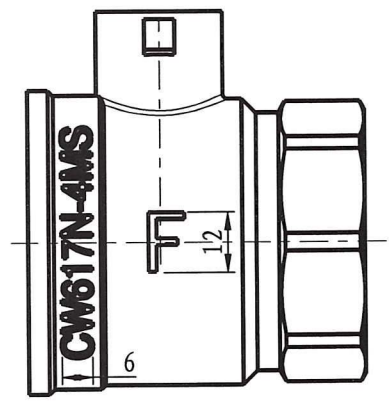
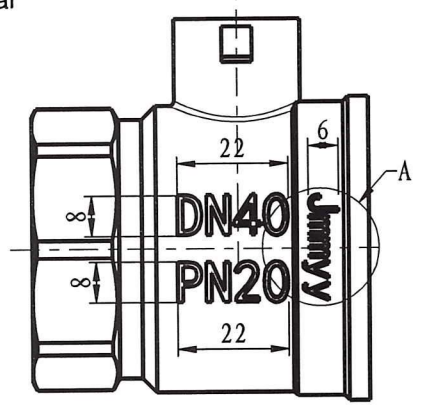
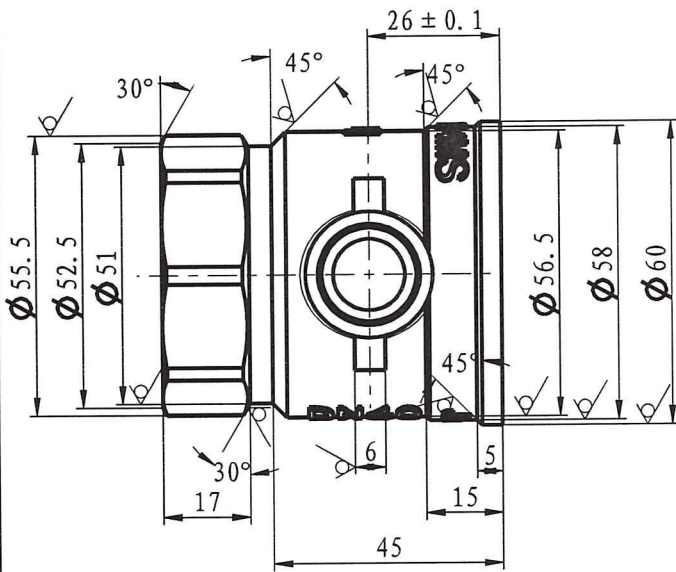
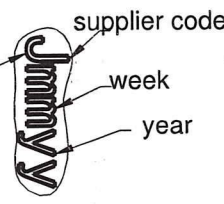
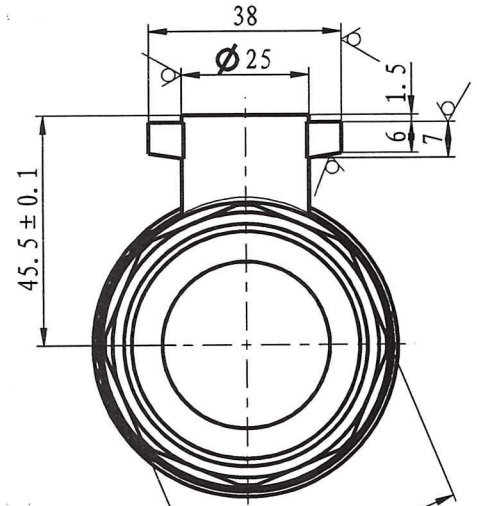
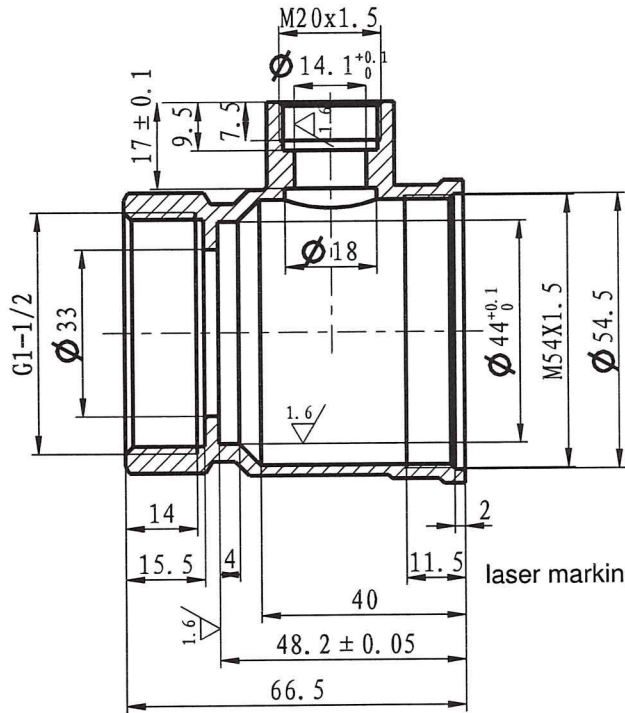


Handle  
 Drawing No.: 10-01207-G40-700D-1220  
 Material: Q235

*hulawh*

Produce for Ferro. S.A

≤ 6	± 0.05
> 6-20	± 0.1
> 20-40	± 0.15
> 40-60	± 0.2
> 60-120	± 0.3
> 120-400	± 0.4



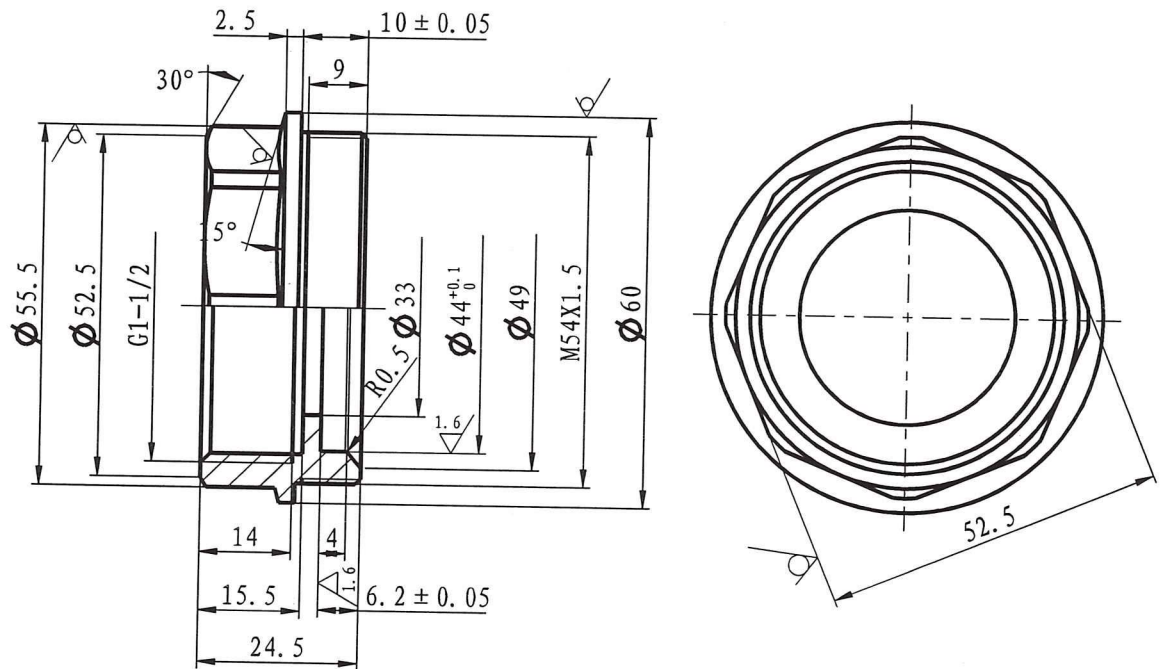
Body  
 Drawing No.: 10-01500-G40-0R28-1220  
 Material: CW617N-4MS

Produce for Ferro. S.A

*Uulark*

≤ 6	± 0.05
> 6-20	± 0.1
> 20-40	± 0.15
> 40-60	± 0.2
> 60-120	± 0.3
> 120-400	± 0.4





≤ 6	> 6-20	> 20-40	> 40-60	> 60-120	> 120-400
± 0.05	± 0.1	± 0.15	± 0.2	± 0.3	± 0.4

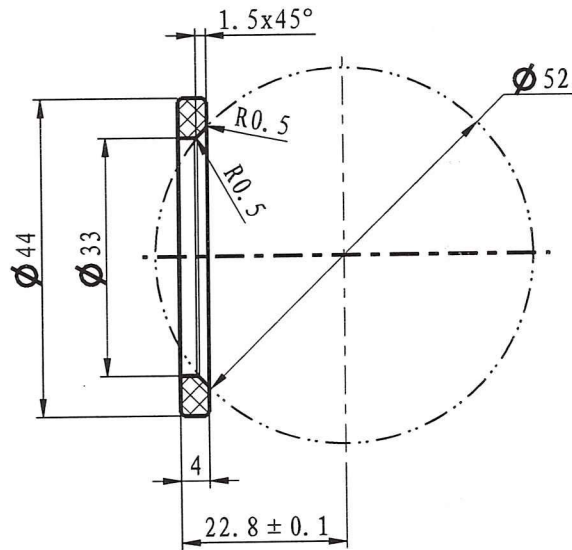
Bonnet

Drawing No.: 10-01500-G40-1R28

Material: CW617N-4MS

*Indonk*

Produce for Ferro. S.A



≤ 6	± 0.05
> 6-20	± 0.1
> 20-40	± 0.15
> 40-60	± 0.2
> 60-120	± 0.3
> 120-400	± 0.4

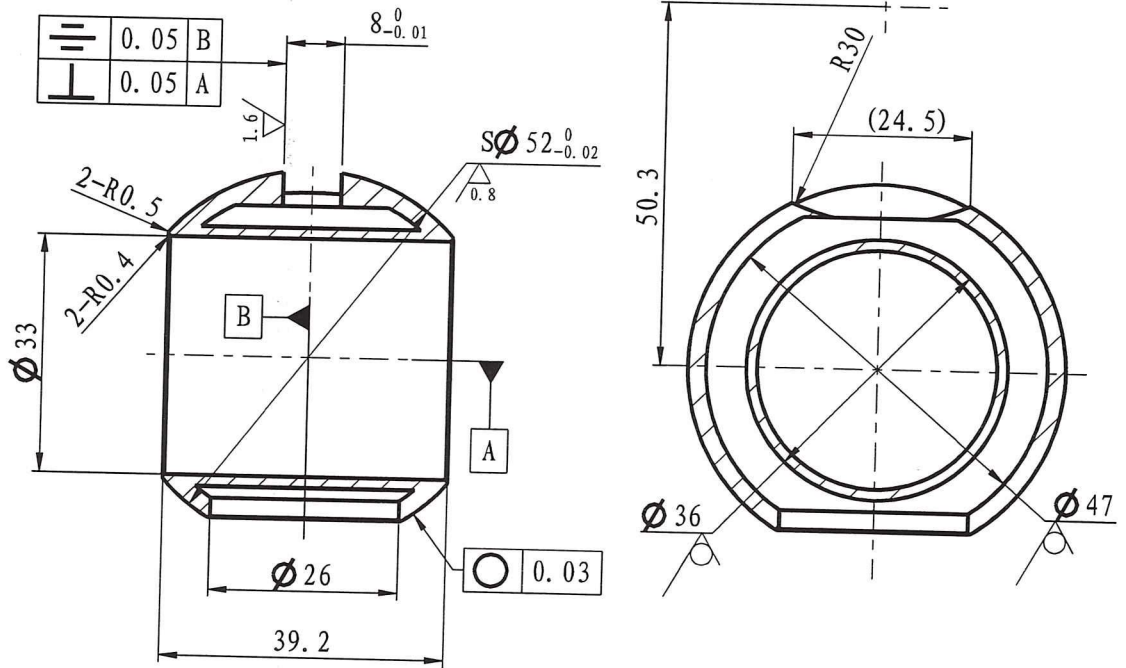
Sealing seat

Drawing No.: 10-01500-G40-20

Material: PTFE

*Mulank*

Produce for Ferro. S.A

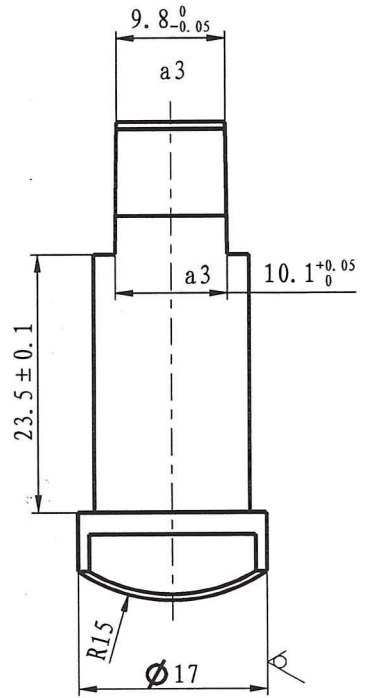
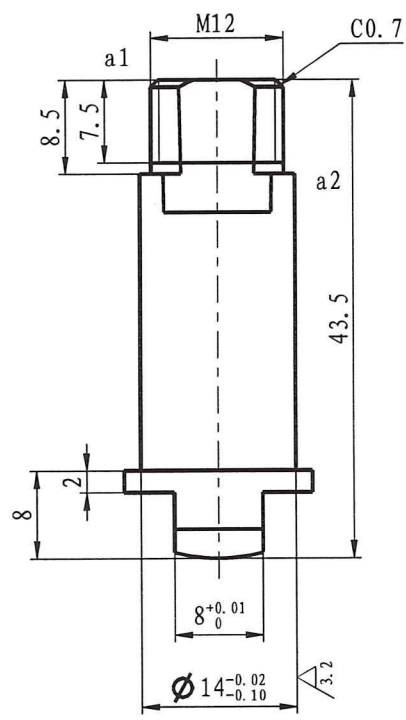


$\leq 6$	$\pm 0.05$
$> 6-20$	$\pm 0.1$
$> 20-40$	$\pm 0.15$
$> 40-60$	$\pm 0.2$
$> 60-120$	$\pm 0.3$
$> 120-400$	$\pm 0.4$

Produce for Ferro. S.A

Ball  
 Drawing No.: 10-01500-G40-3052  
 Material: CW617N-4MS

*Handwritten signature*



≤ 6	± 0.05
> 6-20	± 0.1
> 20-40	± 0.15
> 40-60	± 0.2
> 60-120	± 0.3
> 120-400	± 0.4

Stem  
 Drawing No.: 10-01500-G40-4000  
 Material: CW617N-4MS

*Intouch*

Produce for Ferro. S.A