

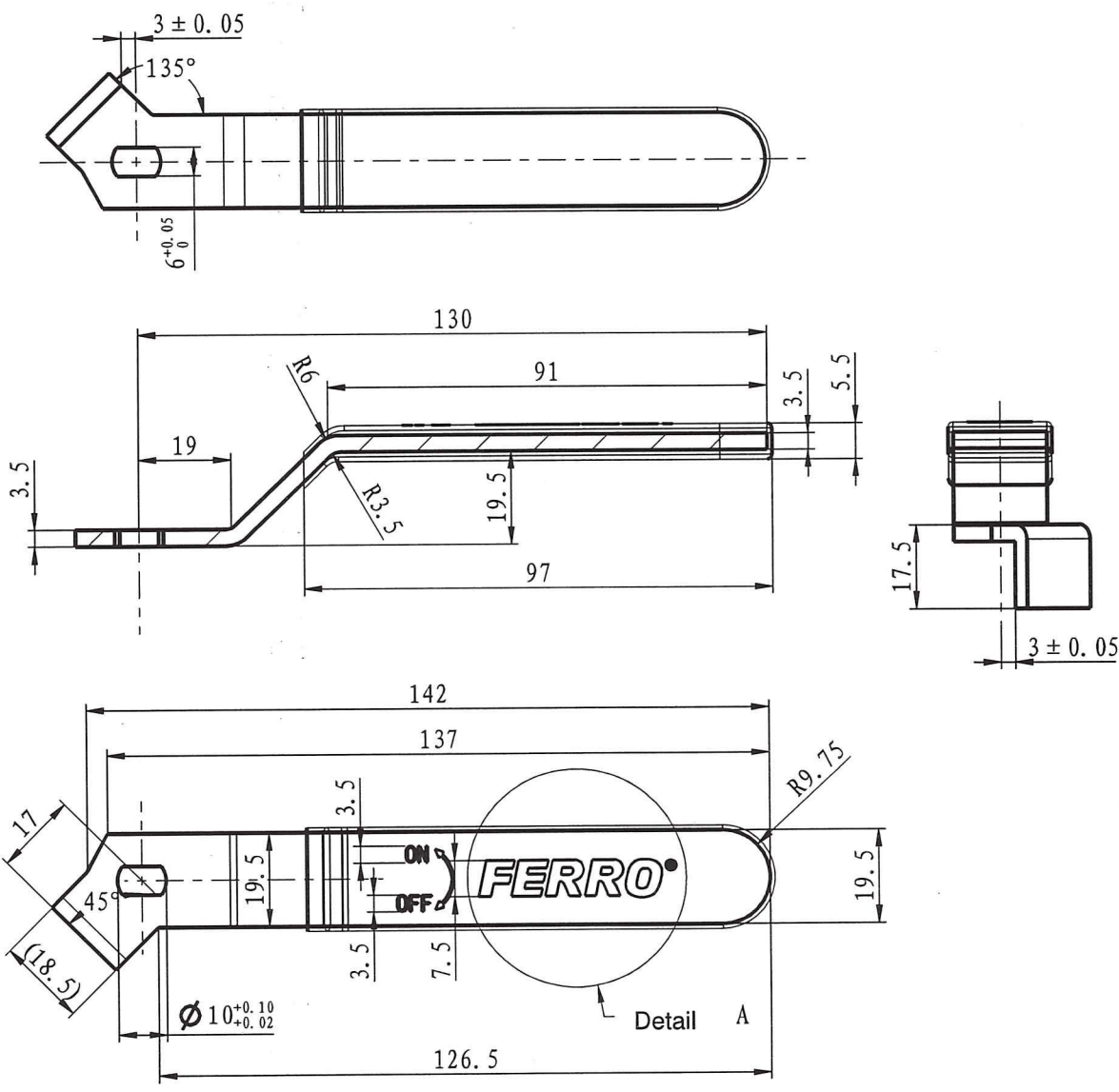
12	10-03500-G32-902N-1220	package		1		
11	10-02500-G32-1R2N	bonnet	CW617N-4MS	1	130.3	130.3
10	10-01516-G32-22	gasket	PTFE	1	0.8	0.8
9	10-01516-G32-20	sealing seat	PTFE	2	3.3	6.4
8	10-01500-G32-4000	stem	CW617N-4MS	1	27.7	27.7
7	10-01500-G32-3052	ball	CW617N-4MS	1	74.2	74.2
6	10-01500-G32-0R28-1220	body	CW617N-4MS	1	194.1	194.1
5	10-01407-R40-7663	rubber sleeve-blue	VMQ (硅胶)	1	0.4	0.4
4	10-01407-R40-7660	rubber sleeve-red	VMQ (硅胶)	1	0.4	0.4
3	10-01407-G32-6200	nut	stainless steel	1	7.4	7.4
2	10-01207-G32-700D-1220	handle	Q235	1	90	90
1	10-01207-G32-5000	press nut	CW617N-4MS	1	7.5	7.5
No	Drawing No	Name	Material	QTY	pc	total
					Weight/g	

KFC41  
 Drawing No.: 10-03500-G32-CP2N-1220  
 Weight: 539g

FERRO S.A.  
 32-050 Skawina ul. Przemysłowa 7  
 REGON 353275388, NIP 944-20-51-648

Produce for Ferro. S.A

*Włoch*



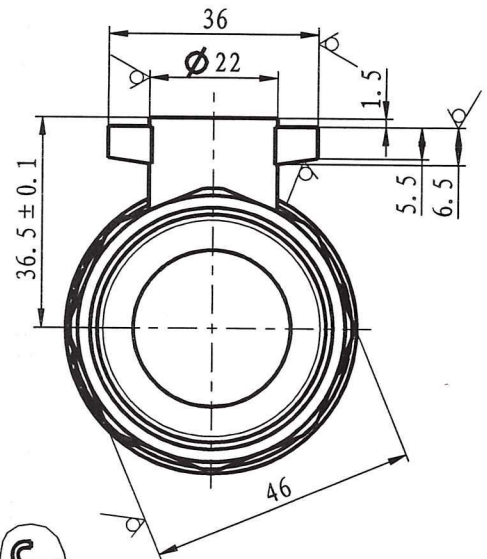
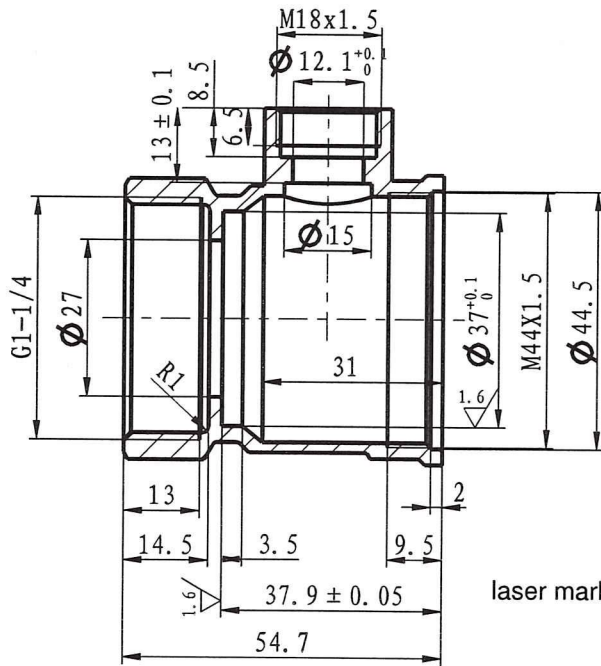
细节 A  
比例 2:1


Handle  
Drawing No.: 10-01207-G32-700D-1220  
Material: Q235

Produce for Ferro. S.A

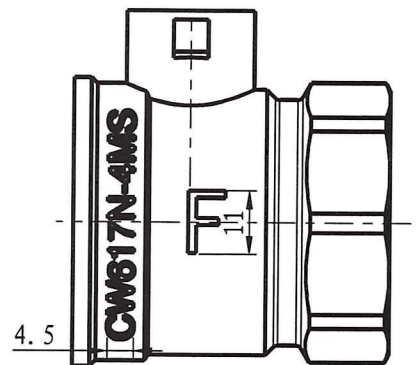
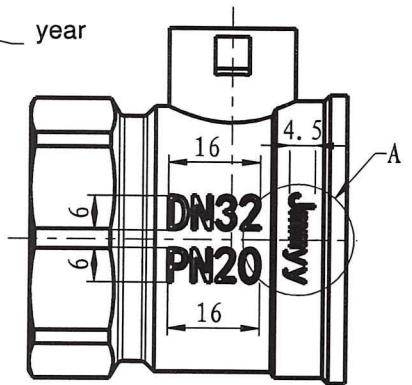
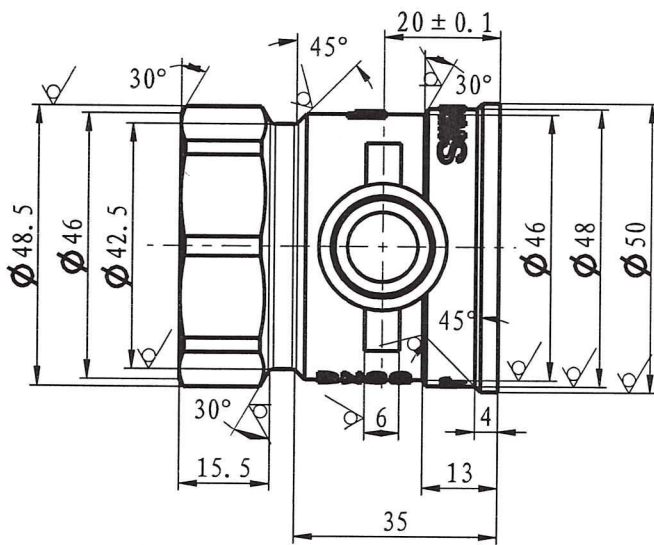
*Intouch*

≤ 6	> 6-20	> 20-40	> 40-60	> 60-120	> 120-400
± 0.05	± 0.1	± 0.15	± 0.2	± 0.3	± 0.4



laser marking  supplier code  
 week  
 year

细节 A  
 比例 3:2



Body

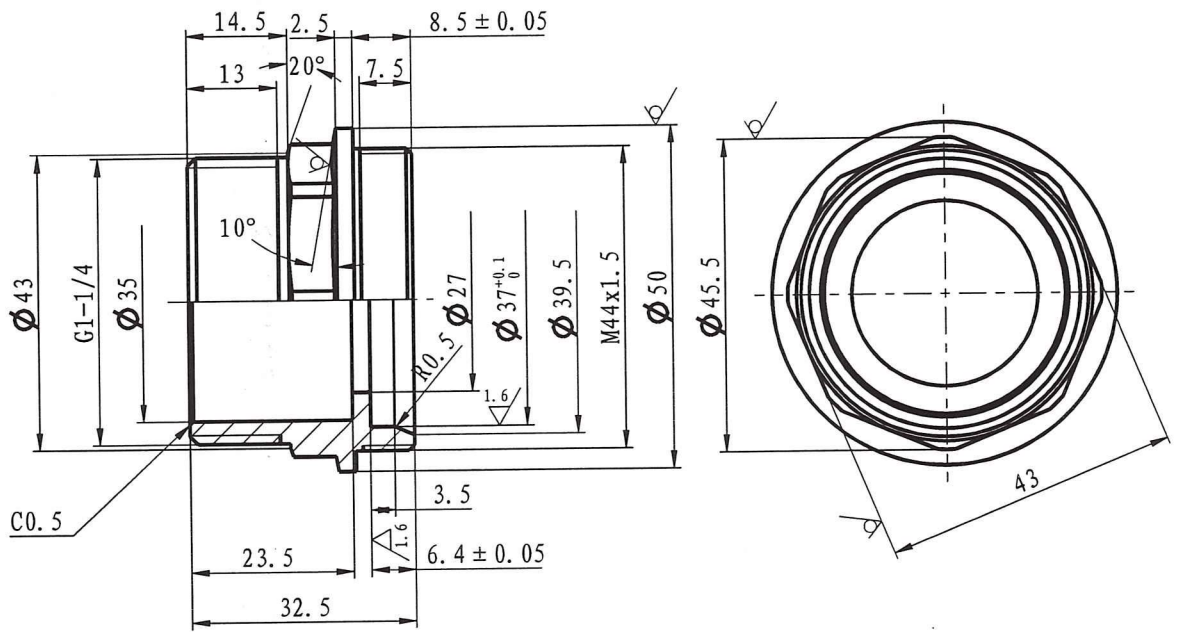
Drawing No.: 10-01500-G32-0R28-1220

Material: CW617N-4MS

*hubsch*

Produce for Ferro. S.A

≤6	> 6-20	> 20-40	> 40-60	> 60-120	> 120-400
±0.05	±0.1	±0.15	±0.2	±0.3	±0.4



≤ 6	± 0.05
> 6-20	± 0.1
> 20-40	± 0.15
> 40-60	± 0.2
> 60-120	± 0.3
> 120-400	± 0.4

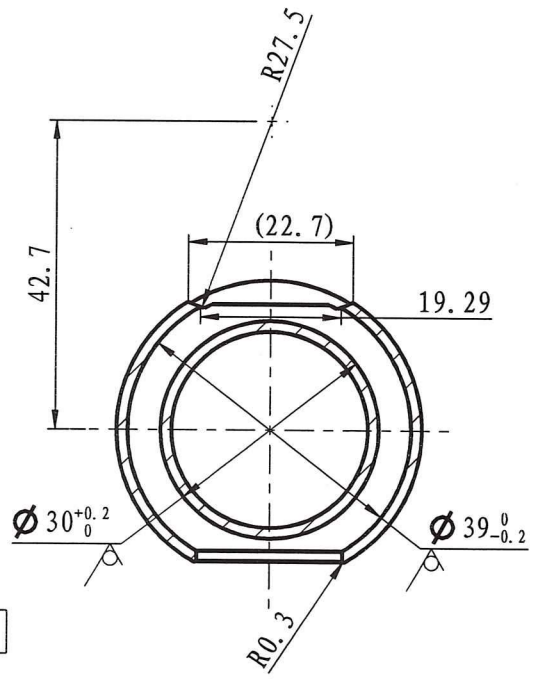
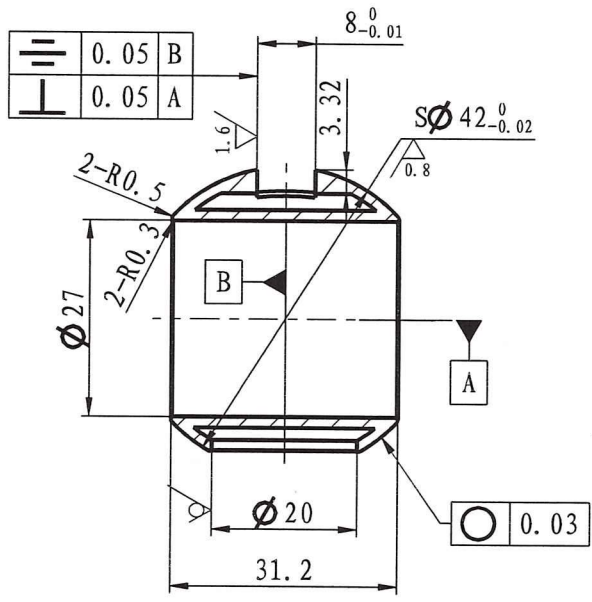
Bonnet

Drawing No.: 10-02500-G32-1R2N

Material: CW617N-4MS

*Inkwork*

Produce for Ferro. S.A

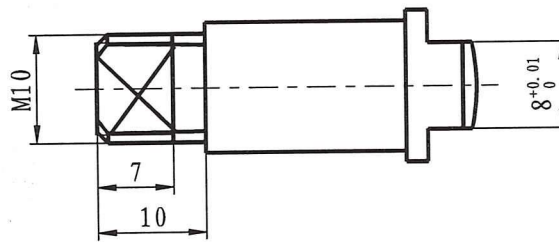
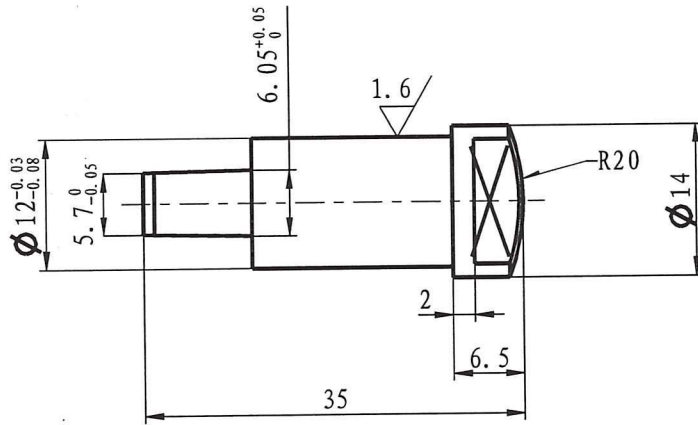


≤ 6	± 0.05
> 6-20	± 0.1
> 20-40	± 0.15
> 40-60	± 0.2
> 60-120	± 0.3
> 120-400	± 0.4

Ball  
 Drawing No.: 10-01500-G32-3052  
 Material: CW617N-4MS

*Intorchi*

Produce for Ferro. S.A



Stem  
 Drawing No.: 10-01500-G32-4000  
 Material: CW617N-4MS

*Handwritten signature*

Produce for Ferro. S.A

≤ 6	> 6-20	> 20-40	> 40-60	> 60-120	> 120-400
± 0.05	± 0.1	± 0.15	± 0.2	± 0.3	± 0.4