

	11	10-01500-G25-9028-1220	package		1		
	11	10-01516-G25-22	gasket	PTFE	1	0.5	0.5
	10	10-01500-G25-4000	stem	CW617N-4MS	1	18.4	18.3
	9	10-01500-G25-3052	ball	CW617N-4MS	1	71.8	71.7
	8	10-01500-G25-20	sealing seat	PTFE	2	1.8	3.6
	7	10-01500-G25-1R28	bonnet	CW617N-4MS	1	70.2	70.2
	6	10-01500-G25-0R28-1220	body	CW617N-4MS	1	126.6	126.6
	5	10-01407-R15-7663	rubber sleeve-blue	VMQ (硅胶)	1	0.2	0.2
	4	10-01407-R15-7660	rubber sleeve-red	VMQ (硅胶)	1	0.2	0.2
	3	10-01207-G25-700D-1220	handle	Q235	1	60	60
	2	10-01207-G25-5000	press nut	CW617N-4MS	1	3.7	3.7
	1	10-01029-N25-6200	nut	stainless steel	1	4.8	4.8
	No	Drawing No	Name	Material	QTY	pc	total
						Weight/g	

KFC3

Drawing No.: 10-01500-G25-CP28-1220

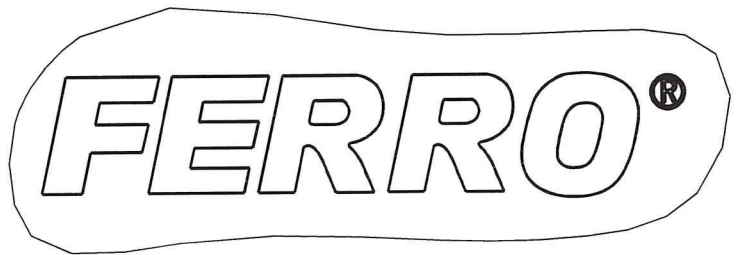
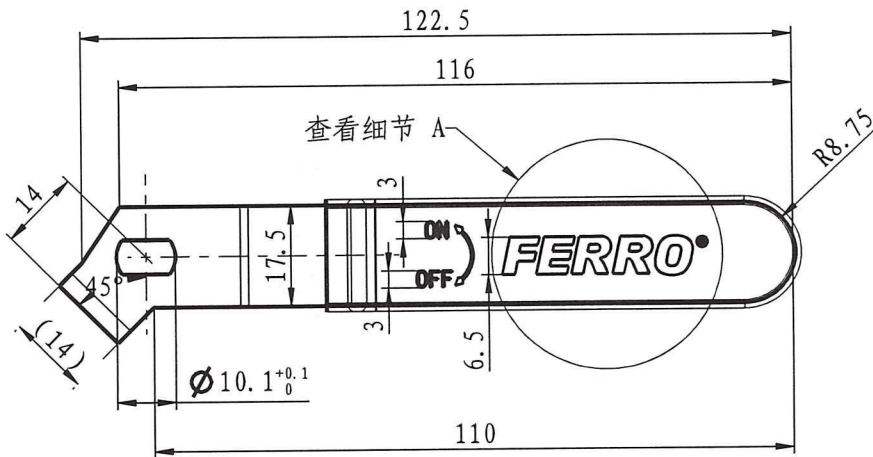
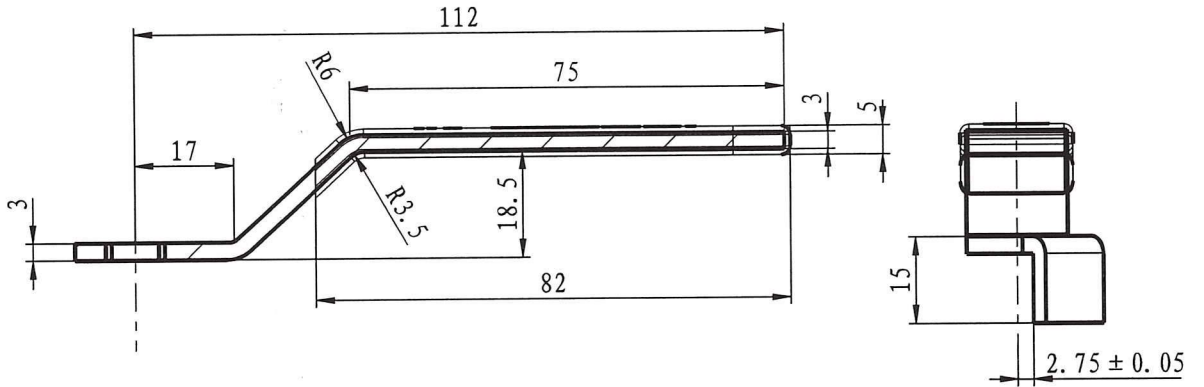
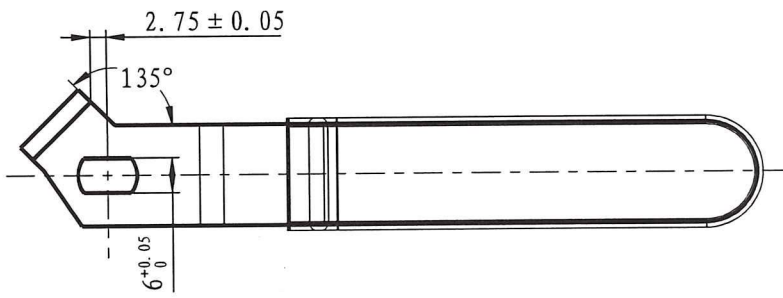
Weight: 360g

32-050 Skawina ul. Przemysłowa 7
REGON 356375388, NIP 944-20-51-648

(15)

Produce for Ferro. S.A

M. Mark



Handle

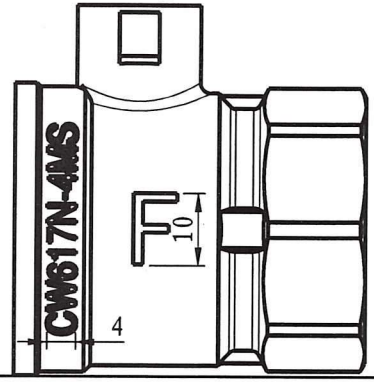
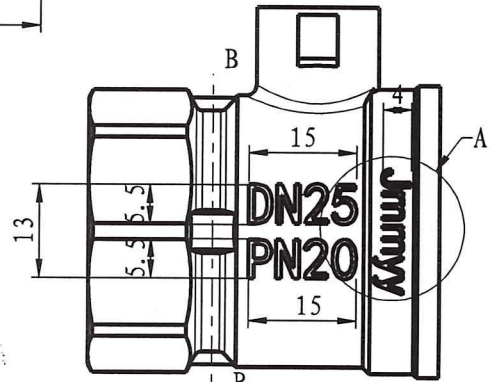
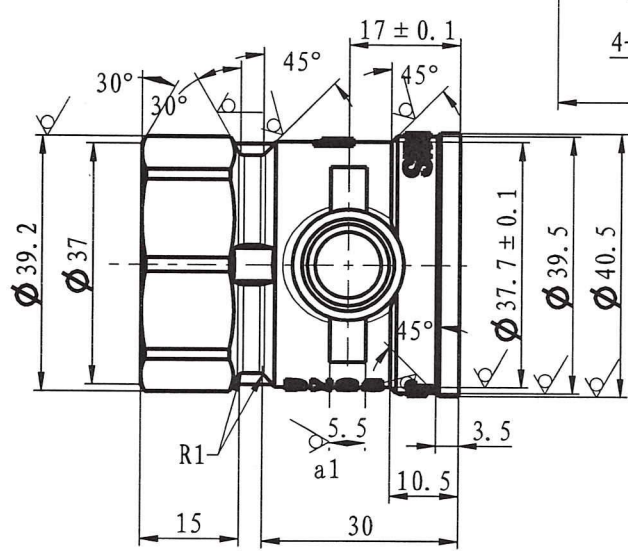
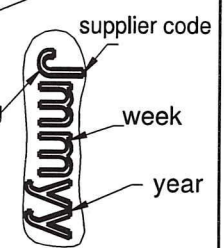
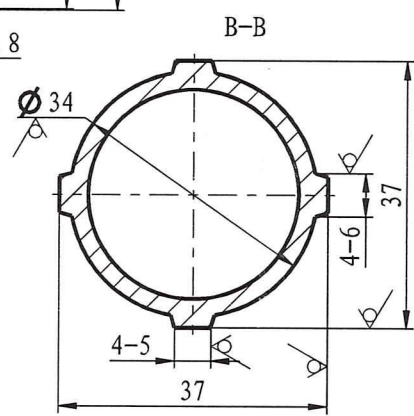
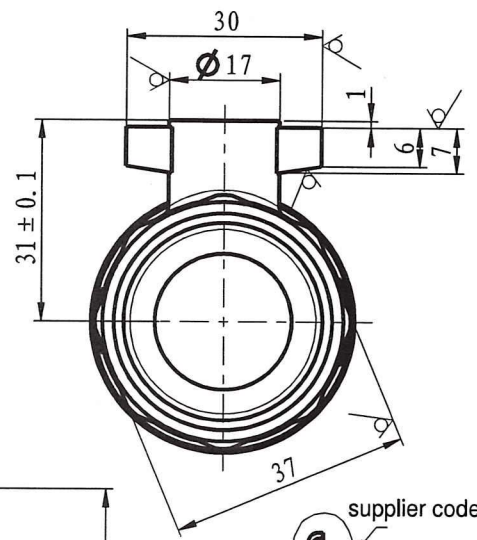
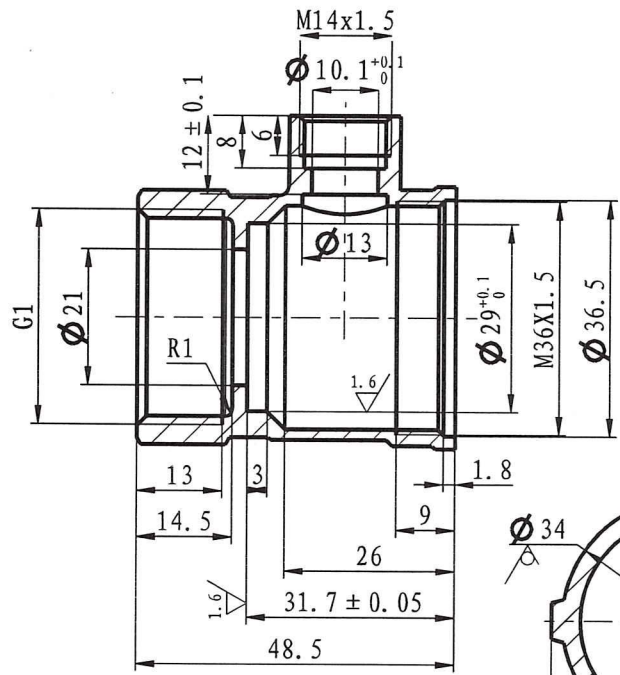
Drawing No.: 10-01207-G25-700D-1220

Material: Q235

hlnk

Produce for Ferro. S.A

≤ 6	> 6-20	> 20-40	> 40-60	> 60-120	> 120-400
± 0.05	± 0.1	± 0.15	± 0.2	± 0.3	± 0.4

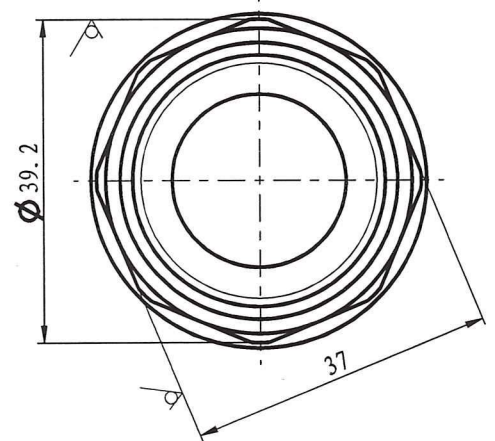
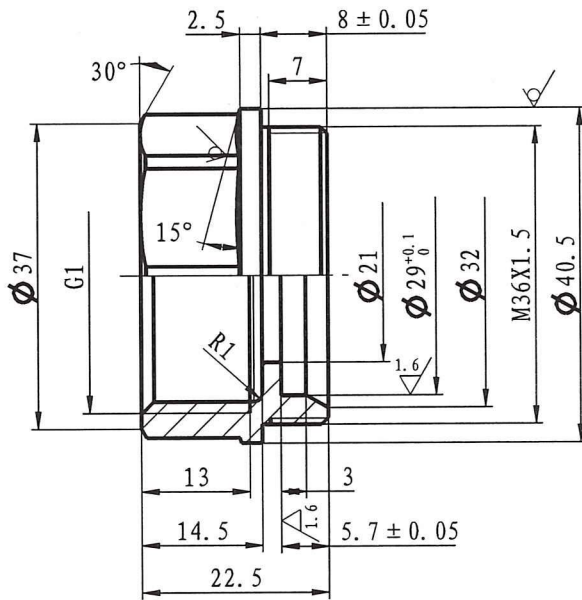


Body
 Drawing No.: 10-01500-G25-0R28-1220
 Material: CW617N-4MS

hulowh

Produce for Ferro. S.A

≤ 6	± 0.05
> 6-20	± 0.1
> 20-40	± 0.15
> 40-60	± 0.2
> 60-120	± 0.3
> 120-400	± 0.4



≤ 6	± 0.05
> 6-20	± 0.1
> 20-40	± 0.15
> 40-60	± 0.2
> 60-120	± 0.3
> 120-400	± 0.4

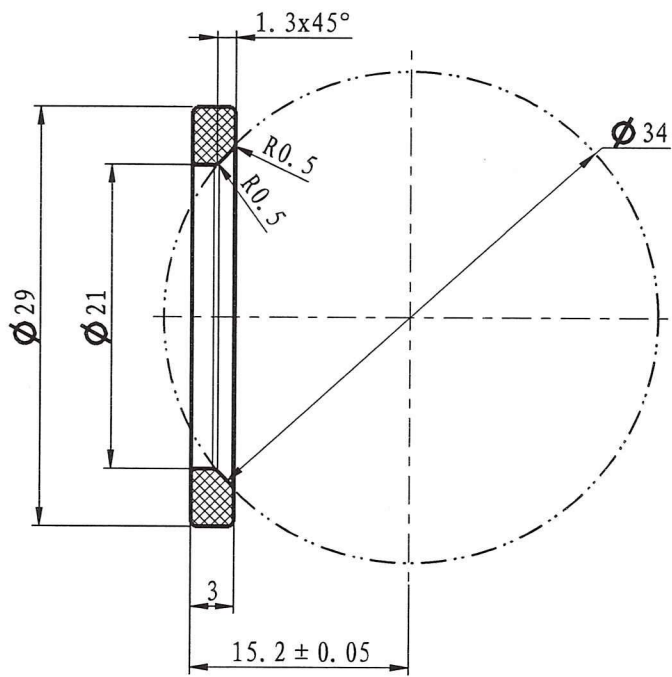
Bonnet

Drawing No.: 10-01500-G25-1R28

Material: CW617N-4MS

Intank

Produce for Ferro. S.A



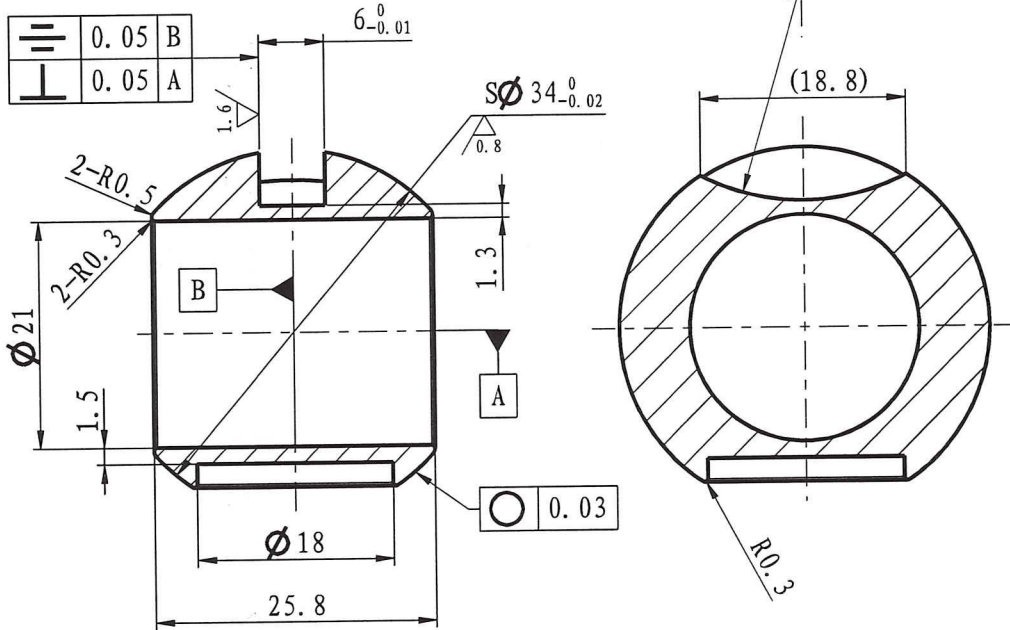
Sealing seat
 Drawing No.: 10-01500-G25-20
 Material: PTFE

Handwritten signature

Produce for Ferro. S.A

≤ 6	± 0.05	> 6-20	± 0.1	> 20-40	± 0.15	> 40-60	± 0.2	> 60-120	± 0.3	> 120-400	± 0.4
-----	--------	--------	-------	---------	--------	---------	-------	----------	-------	-----------	-------

	0.05	B
	0.05	A

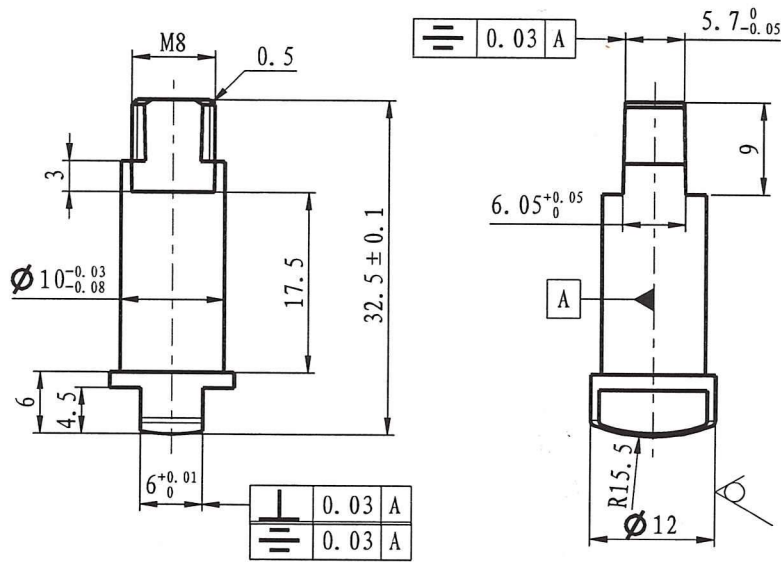


≤ 6	± 0.05
$> 6-20$	± 0.1
$> 20-40$	± 0.15
$> 40-60$	± 0.2
$> 60-120$	± 0.3
$> 120-400$	± 0.4

Produce for Ferro. S.A

Ball
 Drawing No.: 10-01500-G25-3052
 Material: CW617N-4MS

Handwritten signature



≤ 6	± 0.05
> 6-20	± 0.1
> 20-40	± 0.15
> 40-60	± 0.2
> 60-120	± 0.3
> 120-400	± 0.4

Stem

Drawing No.: 10-01500-G25-4000

Material: CW617N-4MS

Produce for Ferro. S.A

hulank