

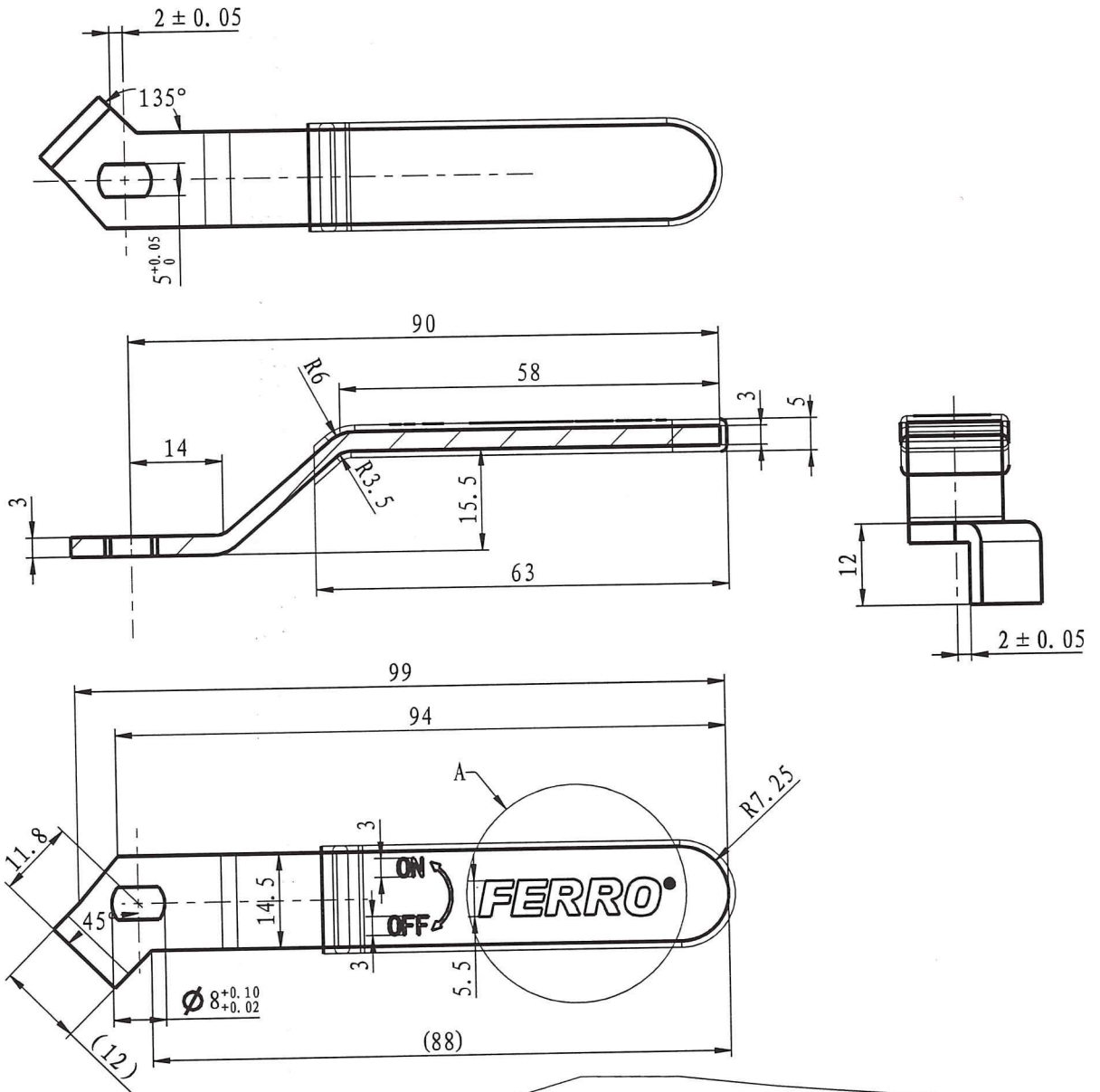
12	10-01500-G20-9028-1220	package		1		
11	10-01516-G15-22	gasket	PTFE	1	0.3	0.3
10	10-01500-G20-3052	ball	CW617N-4MS	1	38.6	38.6
9	10-01500-G20-20	sealing seat	PTFE	2	1.2	2.4
8	10-01500-G20-1R28	bonnet	CW617N-4MS	1	48.5	48.5
7	10-01500-G20-0R28-1220	body	CW617N-4MS	1	90	90
6	10-01500-G15-4000	stem	CW617N-4MS	1	9.6	9.6
5	10-01407-R15-7663	rubber sleeve-blue	VMQ (硅胶)	1	0.2	0.2
4	10-01407-R15-7660	rubber sleeve-red	VMQ (硅胶)	1	0.2	0.2
3	10-01400-G15-6200	nut	stainless steel	1	2.7	2.7
2	10-01207-G15-700D-1220	handle	Q235	1	38	38
1	10-01207-G15-5000	press nut	CW617N-4MS	1	2.7	2.7
No	Drawing No	Name	Material	QTY	pc	total
					Weight/g	

**KFC2**  
**Drawing No.: 10-01500-G20-CP28-1220**  
**Weight: 233g**

**FERRO S.A.**  
 32-050 Skawina ul. Przemysłowa 7  
 REGON 355375388, NIP 944-20-51-648  
 (15)

Produce for Ferro. S.A

*Indane*

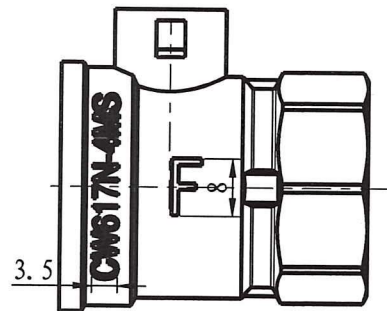
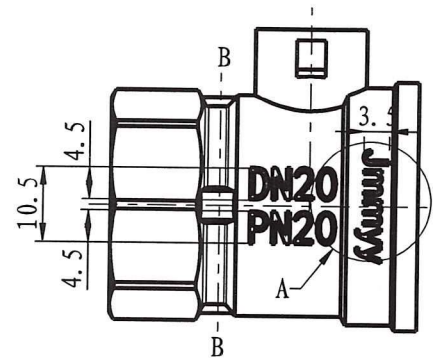
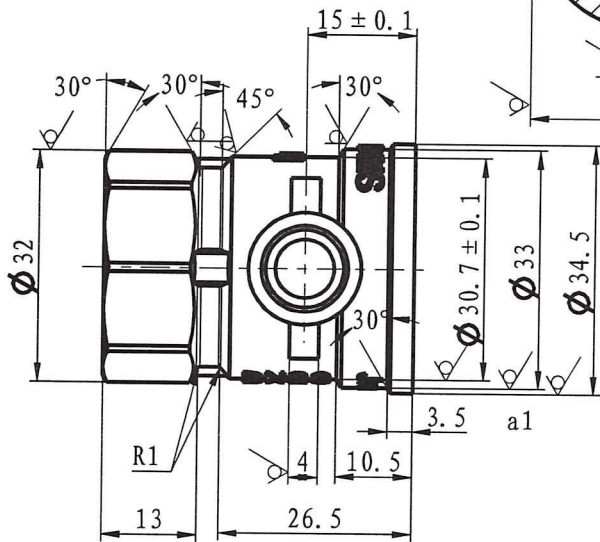
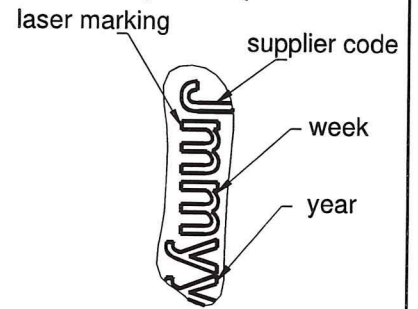
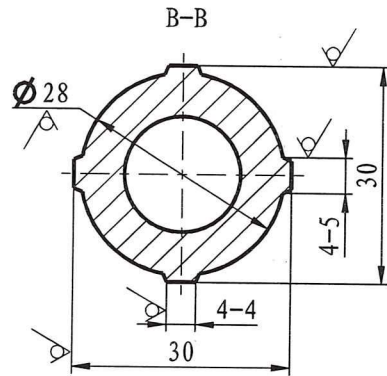
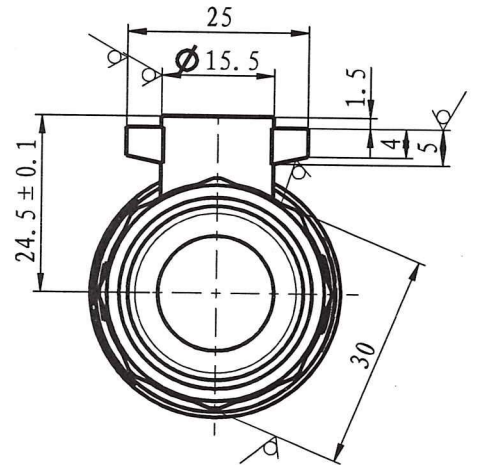
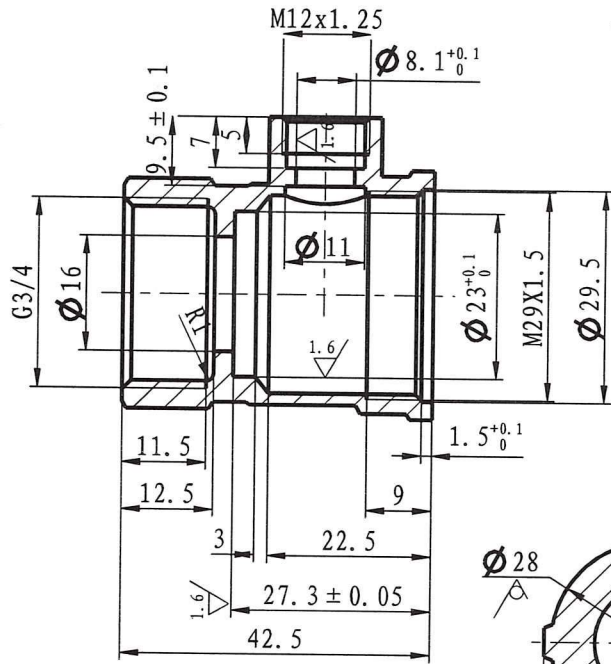


Handle  
 Drawing No.: 10-01207-G15-700D-1220  
 Material: Q235

*hulowh*

Produce for Ferro. S.A

≤ 6	± 0.05	> 6-20	± 0.1	> 20-40	± 0.15	> 40-60	± 0.2	> 60-120	± 0.3	> 120-400	± 0.4
-----	--------	--------	-------	---------	--------	---------	-------	----------	-------	-----------	-------

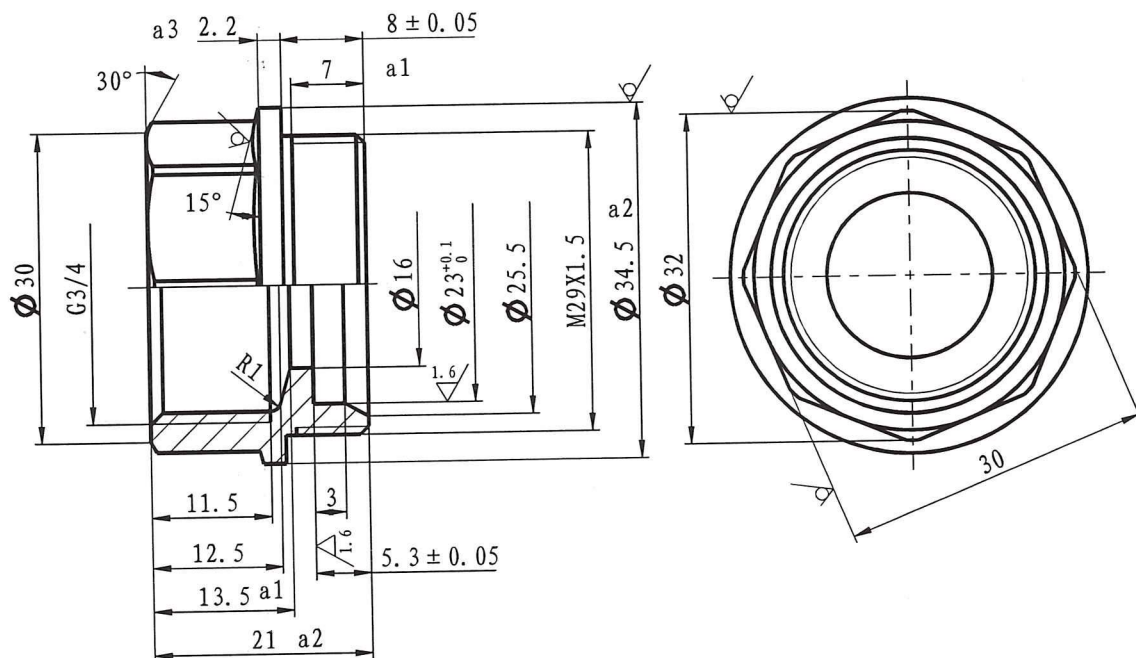


≤ 6	<math>\pm 0.05</math>
> 6-20	<math>\pm 0.1</math>
> 20-40	<math>\pm 0.15</math>
> 40-60	<math>\pm 0.2</math>
> 60-120	<math>\pm 0.3</math>
> 120-400	<math>\pm 0.4</math>

Body  
 Drawing No.: 10-01500-G20-0R28-1220  
 Material: CW617n-4MS

Produce for Ferro. S.A

*hwork*



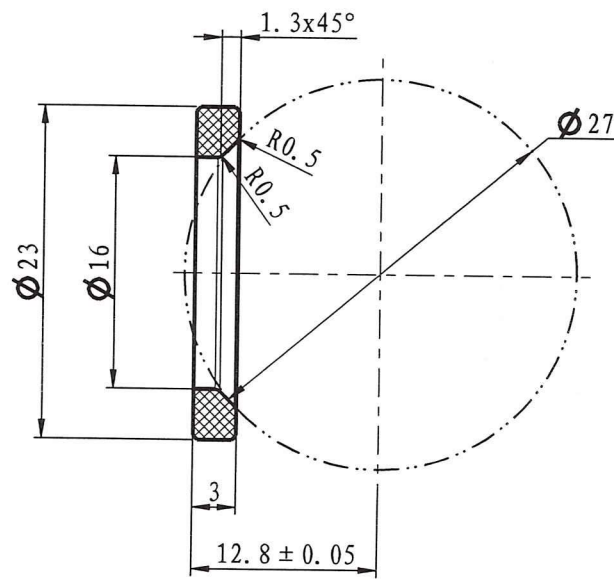
≤ 6	± 0.05
> 6-20	± 0.1
> 20-40	± 0.15
> 40-60	± 0.2
> 60-120	± 0.3
> 120-400	± 0.4

Produce for Ferro. S.A

Bonnet  
 Drawing No.: 10-01500-G20-1R28  
 Material: CW617n-4MS

*Inlork*



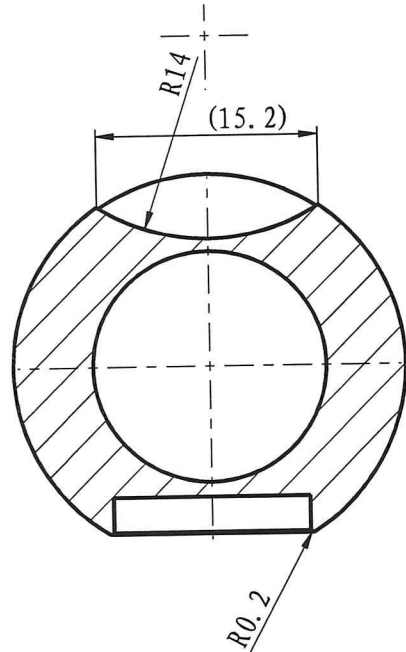
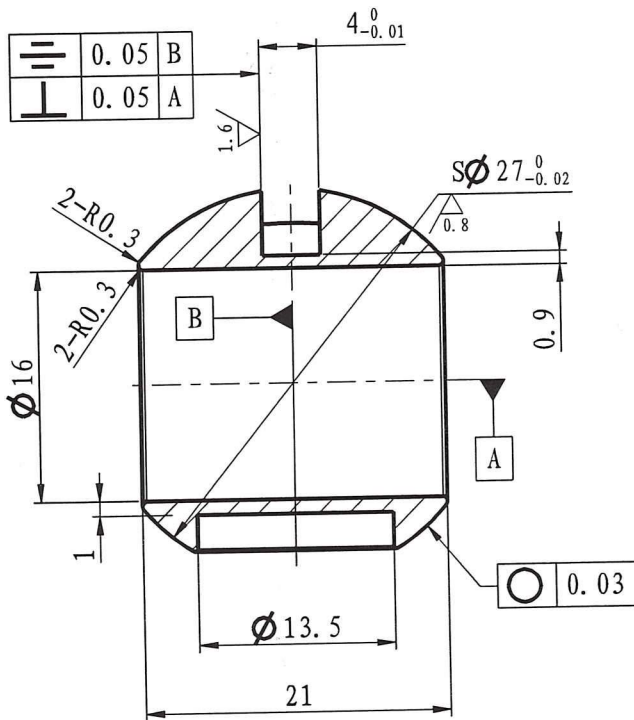


Sealing seat  
 Drawing No.: 10-01500-G20-20  
 Material: PTFE

*hshsh*

Produce for Ferro. S.A

≤ 6	± 0.05	> 6-20	± 0.1	> 20-40	± 0.15	> 40-60	± 0.2	> 60-120	± 0.3	> 120-400	± 0.4
-----	--------	--------	-------	---------	--------	---------	-------	----------	-------	-----------	-------

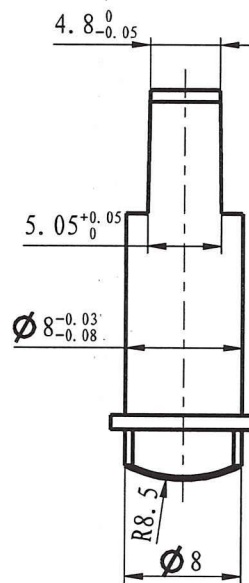
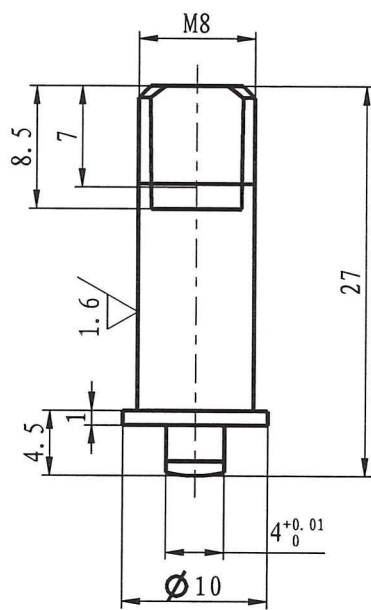


≤ 6	± 0.05
> 6-20	± 0.1
> 20-40	± 0.15
> 40-60	± 0.2
> 60-120	± 0.3
> 120-400	± 0.4

Ball  
 Drawing No.: 10-01500-G20-3052  
 Material: CW617n-4MS

*hnbouh*

Produce for Ferro. S.A



Stem

Drawing No.: 10-01500-G15-4000

Material: CW617n-4MS

*hlonk*

Produce for Ferro. S.A