

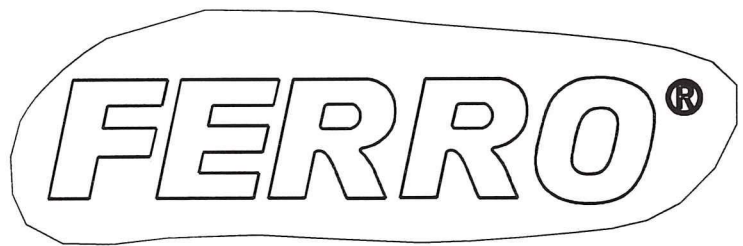
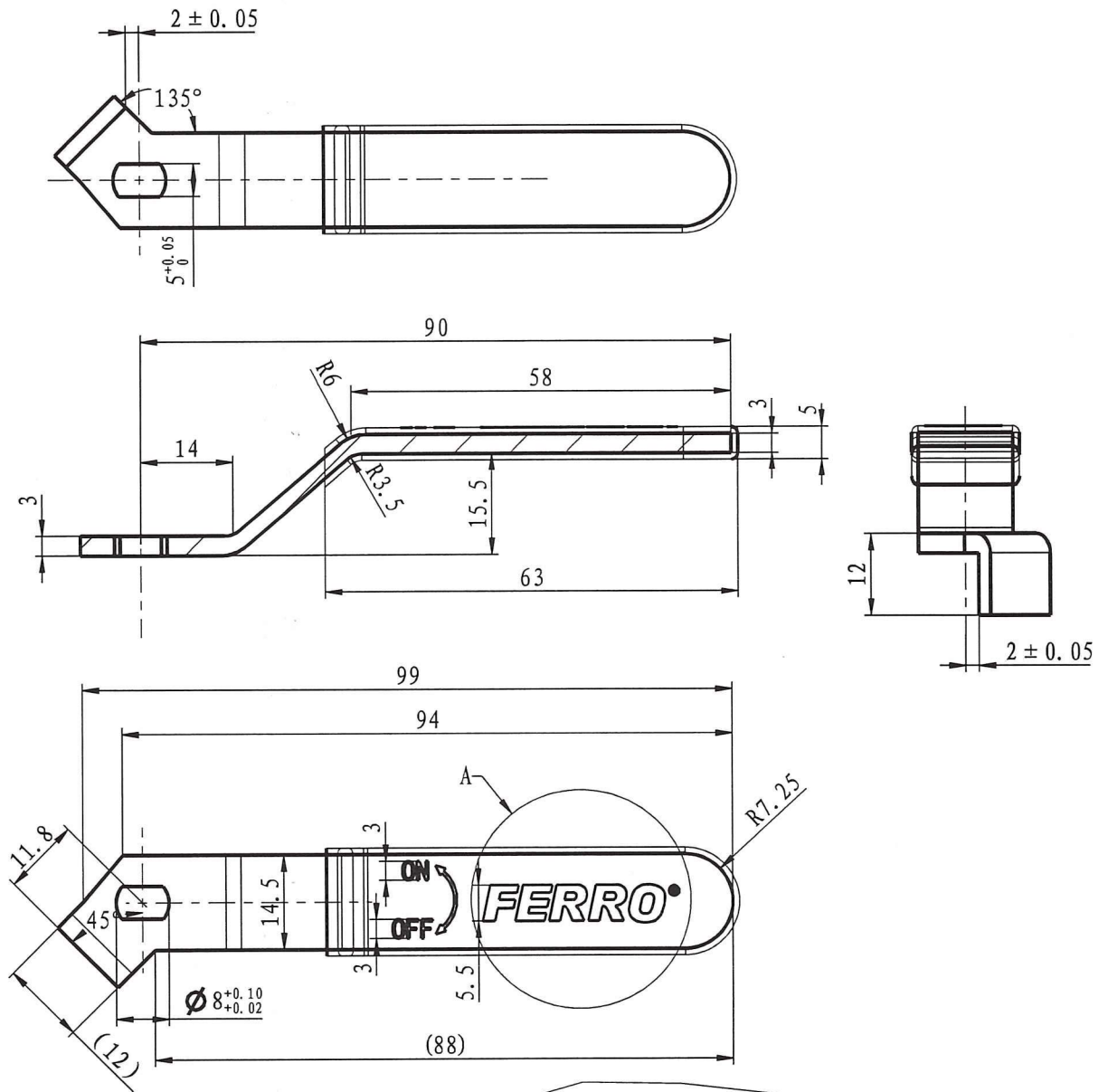
12	10-01500-G15-9028-1220	package		1		
11	10-05175-015-20	sealing seat	PTFE	2	0.7	1.4
10	10-01516-G15-22	gasket	PTFE	1	0.3	0.3
9	10-01500-G15-4000	stem	CW617N-4MS	1	9.6	9.6
8	10-01500-G15-3052	ball	CW617N-4MS	1	17.5	17.5
7	10-01500-G15-1R28	bonnet	CW617N-4MS	1	30.1	30
6	10-01500-G15-0R28-1220	body	CW617N-4MS	1	58.6	58.6
5	10-01407-R15-7663	rubber sleeve-blue	VMQ (硅胶)	1	0.2	0.2
4	10-01407-R15-7660	rubber sleeve-red	VMQ (硅胶)	1	0.2	0.2
3	10-01400-G15-6200	nut	stainless steel	1	2.7	2.7
2	10-01207-G15-700D-1220	handle	Q235	1	38	38
1	10-01207-G15-5000	press nut	CW617N-4MS	1	2.7	2.7
No	Drawing No	Name	Material	QTY	pc	total
					Weight/g	

KFC1  
 Drawing No.: 10-01500-G15-CP28-1220  
 Weight: 161g

"FERRO" S.A.  
 32-050 Skawina ul. Przemysłowa 7  
 REGON 356375388, NIP 944-20-51-646  
 (15)

Produce for Ferro. S.A

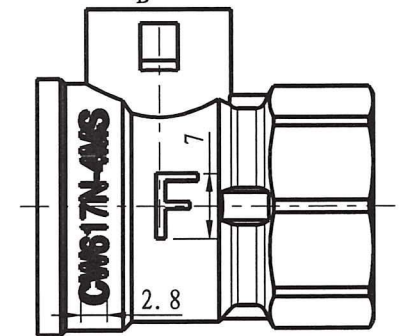
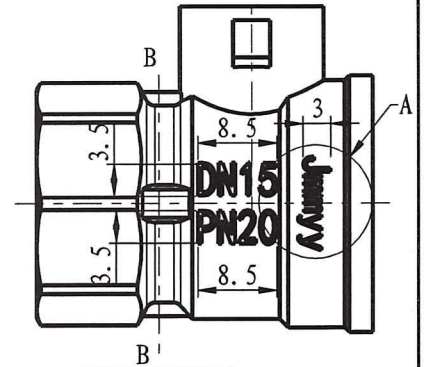
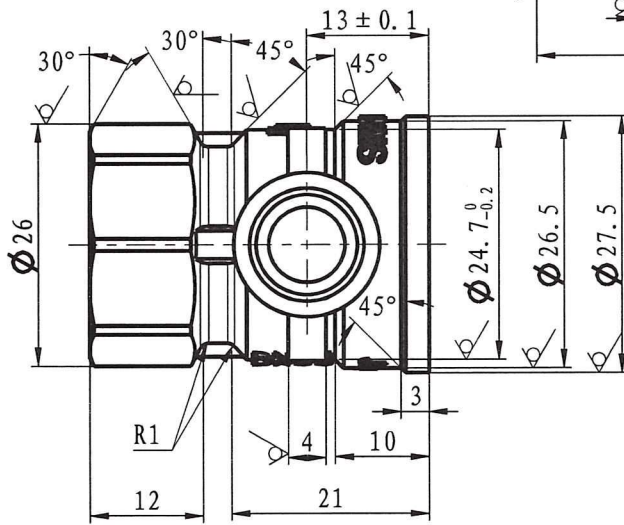
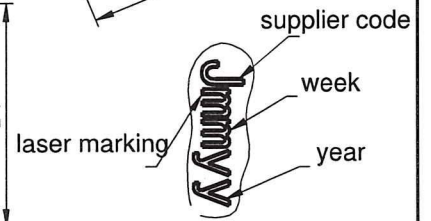
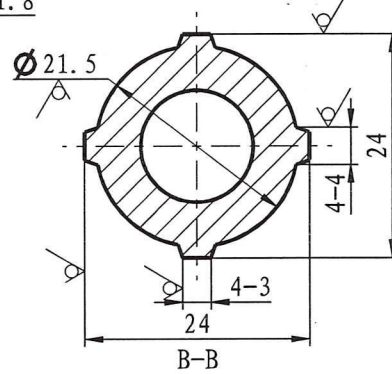
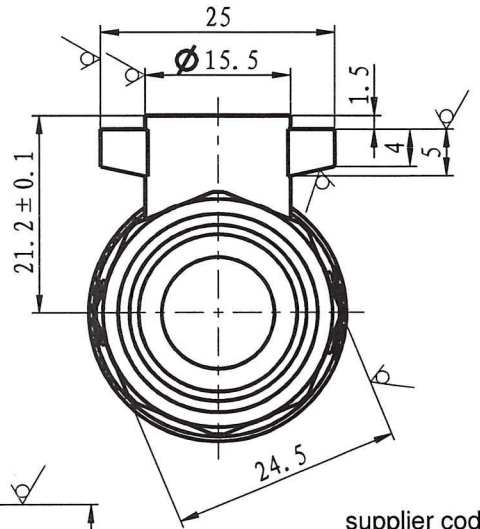
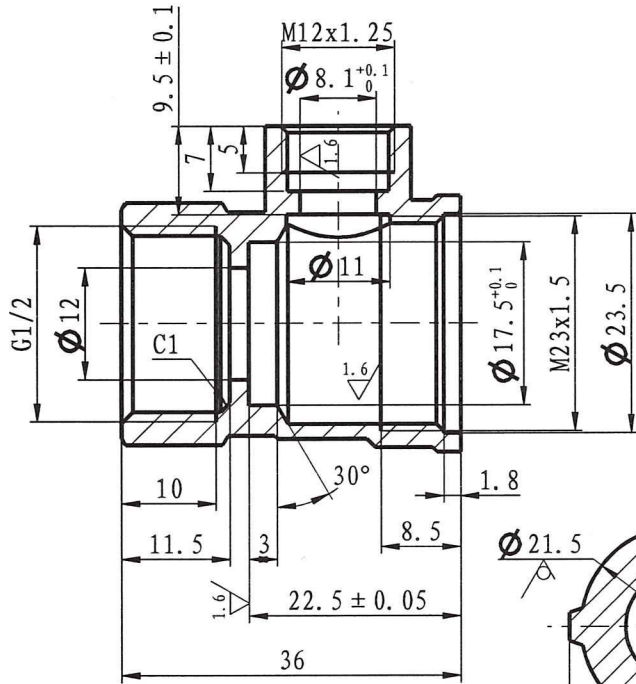
*Włocławek*



Handle  
 Drawing No.: 10-01207-G15-700D-1220  
 Material: Q235

*Inloubk*

Produce for Ferro. S.A

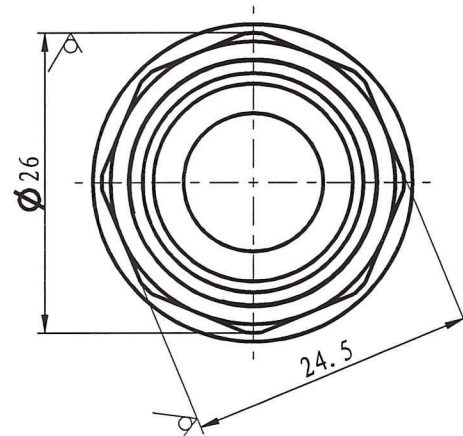
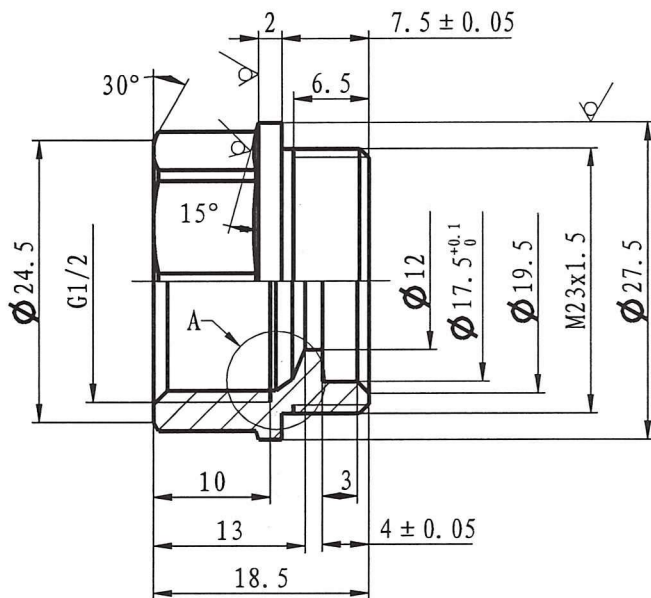


≤ 6	> 6-20	> 20-40	> 40-60	> 60-120	> 120-400
± 0.05	± 0.1	± 0.15	± 0.2	± 0.3	± 0.4

Body  
 Drawing No.: 10-01500-G15-0R28-1220  
 Material: CW617n-4MS

*luloude*

Produce for Ferro. S.A



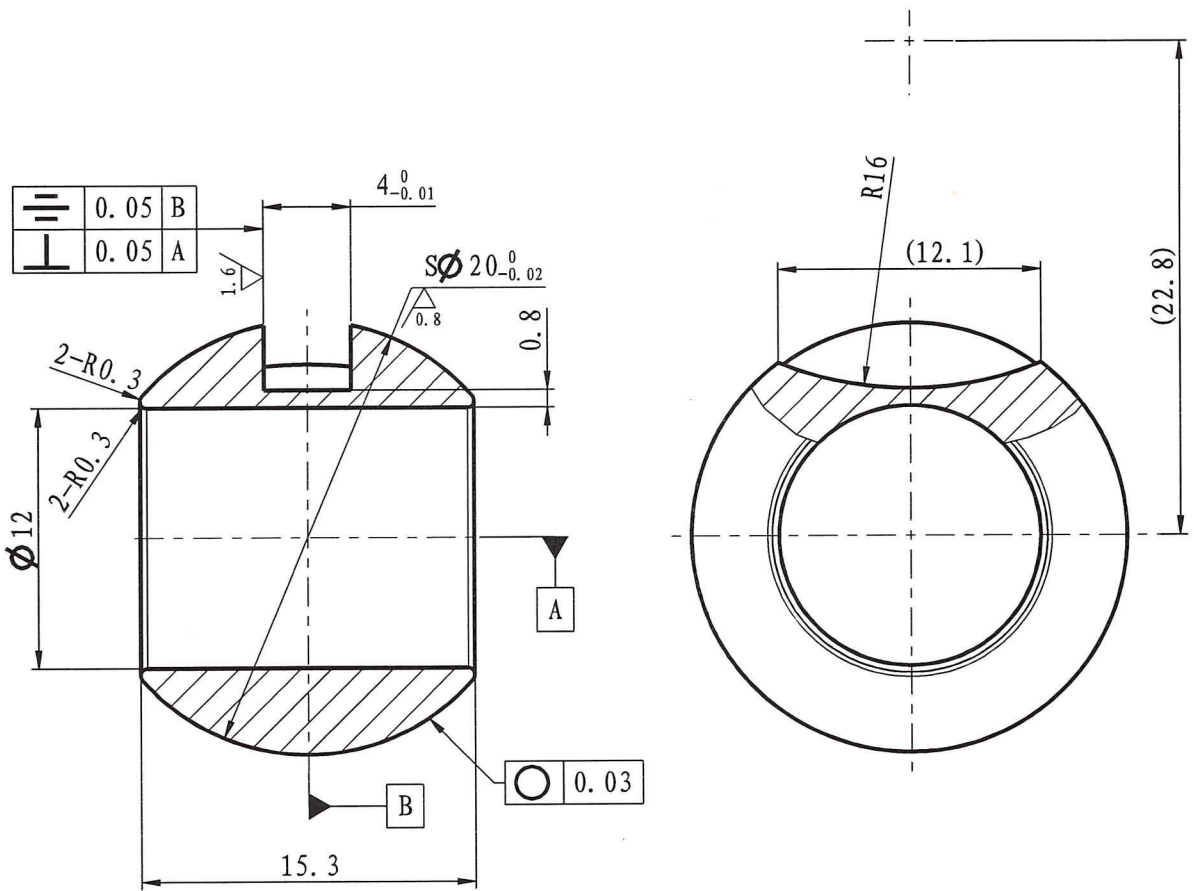
≤ 6	± 0.05
> 6-20	± 0.1
> 20-40	± 0.15
> 40-60	± 0.2
> 60-120	± 0.3
> 120-400	± 0.4

Bonnet  
 Drawing No.: 10-01500-G15-1R28  
 Material: CW617n-4MS

*Inloubh*

Produce for Ferro. S.A



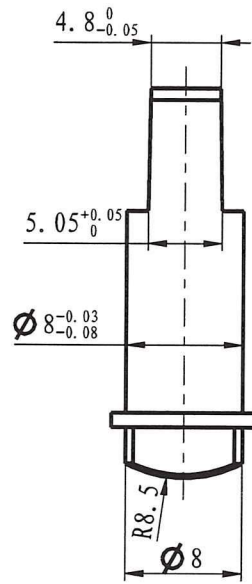
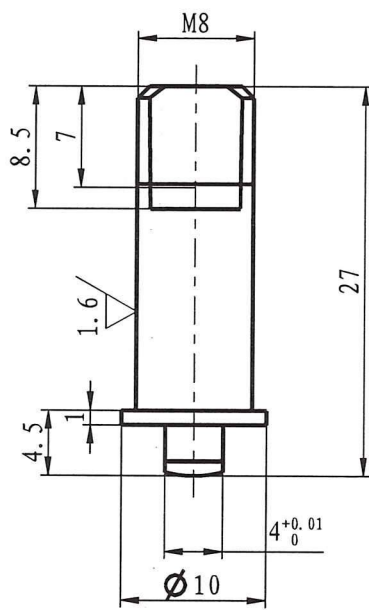


< 6	± 0.05
> 6-20	± 0.1
> 20-40	± 0.15
> 40-60	± 0.2
> 60-120	± 0.3
> 120-400	± 0.4

Ball  
 Drawing No.: 10-01500-G15-3052  
 Material: CW617n-4MS

*Handwritten signature*

Produce for Ferro. S.A



≤ 6	> 6-20	> 20-40	> 40-60	> 60-120	> 120-400
± 0.05	± 0.1	± 0.15	± 0.2	± 0.3	± 0.4

Produce for Ferro. S.A

Stem

Drawing No.: 10-01500-G15-4000

Material: CW617n-4MS

*Indonka*